

instructions

TDW019



START™

International

CONTENTS

Read this user's manual before use to ensure proper operation. Keep the manual on hand for reference in case there is a problem.

Warranty Information.....	2
Repair Policy.....	2
Notes	3
Features	3
Troubleshooting	3
Preventive Maintenance	3
Set-up.....	4
Operation.....	4
Specifications.....	5
Parts List.....	5
Legend	5
Exploded Views/Parts Breakdown	6

WARRANTY POLICY FOR TDW019 TAPE WRAPPER

START International warrants all parts on the TDW019 tape wrapper against defects in design, materials and workmanship for a period of 360 days. Parts excluded from this are: cutting blade; this part is considered a "wear part". Labor to replace defective parts will be performed at no charge for the first 180 days after date of purchase. Warranty does not cover transportation costs.

Our sole obligation under this warranty is limited to repair, replacement or credit of the purchase price, at our option, for units that do not perform properly the function for which they were designed.

Warranty repair is contingent upon our examination and determination that alleged defects have not been caused by misuse, abuse, improper installation or application, repair, alteration, accident or neglect in use, storage, transportation or handling.

The above warranty and remedy constitutes START International's sole liability hereunder and are in lieu and exclusive of all other warranties and remedies expressed, implied, or statutory, including, but not limited to, those of merchantability and fitness for a particular purpose.

REPAIR POLICY

Contact START International to determine nature of problem.

Furnish START with the following information:

1. Who the unit was purchased from.
2. Model number and serial number.
3. Date purchased (copy of invoice or packing slip required).

START will issue an RGA (Return Goods Authorization) for the repair.
Return machine to START International by UPS, insured and prepaid.

START will notify the customer if there is a repair charge.

A \$25.00 evaluation charge will apply to all non-warranty repairs, and will be applied to subsequent repair charge.

NOTES

- Do not leave tape wrapper in direct sunlight.
- Wipe with dry cloth only.
- Do not drop the dispenser or subject it to heavy shock.

FEATURES

- Accepts wide range of bundle sizes.
- Will feed as much tape as is needed to complete wrap.
- The blade is easy to remove and replace.

TROUBLESHOOTING

Tape Reel Frame will not turn.

- Check all rollers for obstructions.
- Rotate frame backwards for 1/4 turn, then rotate forward.

Unit will not cut tape.

- Clean blade with IPA to remove any adhesive or foreign matter.
- Check blade screws to ensure that the blade is held in tightly.
- Contact START International for tape compatibility.

PREVENTIVE MAINTENANCE

WEEKLY - Check blade for adhesive build-up. Clean as needed.

MONTHLY - Check rollers and frame for adhesive build-up. Clean as needed.

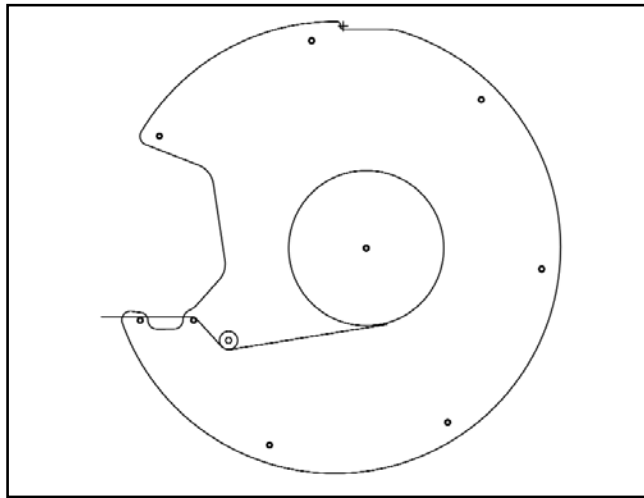


Figure 1

SET UP

1. Place tape roll onto reel holder. Material is to be loaded with adhesive side up.
2. Thread tape through front rollers as shown in Fig. 1. Tape goes under large one-way roller and over the two smaller rollers.
3. Pull tape out until it is past the blade, then pull the tape down across the blade to cut it.

OPERATION

1. Place wire bundle to be wrapped onto tape between the two small rollers. (There is a cut out in the frame to help locate the part.)
2. Push the bundle down. The tape will stick to the bundle and the Tape Reel Frame will rotate.
3. Continue wrapping bundle through a complete revolution. Depending on the bundle size, 2-3 revolutions might be necessary.
4. On final revolution, continue slightly past the tape opening. Pull bundle back up and out of the wrapper. This will activate the locking mechanism and pull the tape above the blade. Pull the bundle down, allowing the tape to drop past the blade guard and be cut.

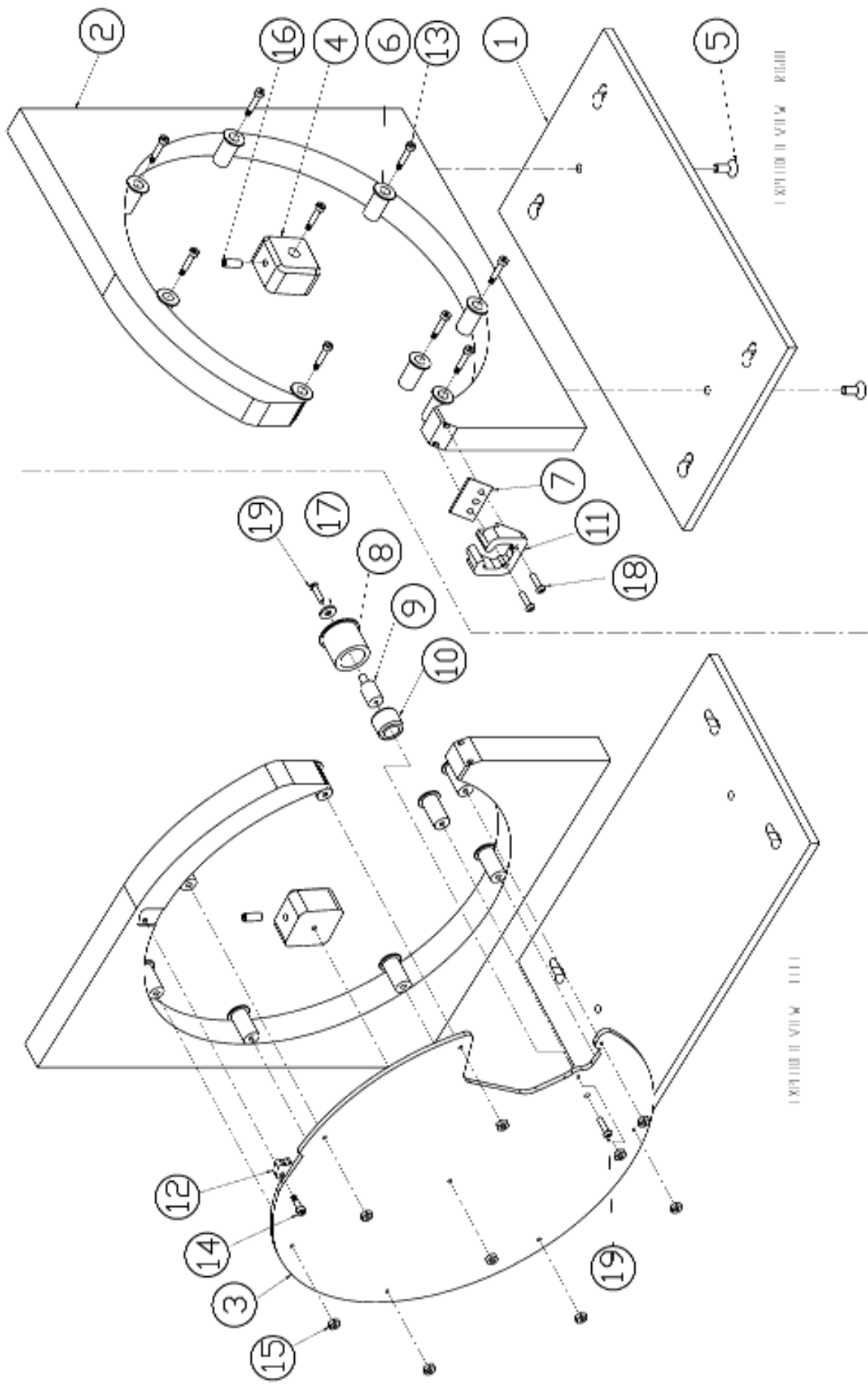
SPECIFICATIONS

Model #	Tape Width	Cut Length	Max. Outside Diameter	Core Diameter	Tape Cutter	Feed Type	Weight	Dimensions
TDW019	.25 to .75" (6.4 to 19mm)	Dependent on bundle diameter	7" (178mm)	1.5" * (38mm)	Manual	Manual	Machine: 5.5lb (2.5 kg) Shipping: 6.75 lb (3.1 kg)	10.5 x 6 x 11" (267 x 152 x 279mm)

* 1.25" (32mm) and 3" (76.2mm) available

LEGEND/PARTS LIST

Item #	Part Number	Description
1	TDW019-01	Base Plate
2	TDW019-02	Frame
3	TDW019-03	Tape Reel Frame
4	TDW019-04A	Tape Holder, 1.25"
4	TDW019-04B	Tape Holder, 1.5"
4	TDW019-04C	Tape Holder, 3"
5	LD50015-1	Screw
6	TDW019-06	Guide Roller
7	TDW019-07	Blade
8	TDW019-08	Clutch Bearing Roller
9	TDW019-09	Clutch Bearing Shaft
10	TDM080-09	Clutch Bearing
11	TDW019-11	Blade Holder
12	TDW019-12	Catch Lock
13	TDW019-13	Shoulder Screw
14	TDW019-14	Shoulder Screw
15	LD50021-1	Nut
16	TDW019-04-1	Screw
17	TDW019-17	Washer
18	TDW019-18	Screw
19	TDW019-19	Screw





START™

I n t e r n a t i o n a l

4270 Airborn Drive

Addison, TX 75001, USA

Toll Free 800.259.1986

Tel 972.248.1999

Fax 972.248.1991

info@startinternational.com

www.startinternational.com