



Taping & Labeling Solutions

We Are Dispensers™

Electric LABEL Dispensers



Electric TAPE Dispensers



Non-Adhesive Cutters



Specialty Machines



Product Catalog

STARTinternational.com

TABLE OF CONTENTS

- Tape Dispensers 3-13**
Electric Tape Dispensers
Manual Tape Dispensers
Specialty Tape Applications

- Label Dispensers 14-23**
Electric Label Dispensers
Specialty Label Applications
Manual Label Dispensers
Hand-Held Label Applicators
Die-Cut Part Dispenser

- Non-Adhesive Cutters 26-29**
Industrial Heavy-Duty Cutters
Light-Duty Cutters

- Accessories 30-31**

- Tape Compatibility Chart . . . 2**
Machine Quick Reference . . . 24-25
Material Evaluation Form . . . 32

Over 35 Years of Excellence

Our Founder:
Dan Sternberg
 1943 - 2009

His passion, principles and values carry on with us.



ABOUT

START International has been providing solutions for manufacturing companies worldwide since 1981. We provide the service and expertise required to ensure that our customers are paired with the best equipment for the job.

MISSION

START's mission is to continuously provide the highest quality products, build and maintain relationships with our customers, and constantly improve the customer service experience.

INNOVATION

START's best product innovations come from simple observations combined with a keen understanding of our customers' needs. Most companies design their products specifically to increase sales volume. START's main goal is not to create a bestseller, but to enhance customers' operations. To attain that goal, our product design engineers develop value-added products. Our approach begins with our unequalled information-gathering techniques. With this unique approach to product development, we are able to provide the highest quality and most effective products for our customers.

As you flip through this catalog, you will see how our product line is designed to fit virtually any taping, labeling and non-adhesive material cutting application.

Trusted Quality

With over 35 years of experience building reliable products, quality is more than a concept. Make sure to check for the START International Trusted Quality indicator to ensure quality for years to come.



Experts waiting to help.

Whether you need help selecting the right product for your application or need advice, START International provides you with comprehensive service you can rely on.



 81	 90	 97	  02	 08	 12	
SEPTEMBER 1981 START MANUFACTURING, INC. FOUNDED	OCTOBER 1990 PCB CATALOG BECOMES INDUSTRY STANDARD	JULY 1997 START PIONEERS USE OF PHOTO SENSORS IN LABEL DISPENSERS	SEPTEMBER 2002 LAUNCHES TDA BRANDED TAPE DISPENSERS	AUGUST 2008 LAB01 BOTTLE LABELER INTRODUCED	2012 UPDATES DESIGN OF ELECTRIC DISPENSERS	



AUTOMOTIVE

Tape Dispensers

Wire Harnessing
Double Face or VHB
Application
Parts Assembly
Paint Masking
Parts Pass-Fail Process

Label Dispensers

Product ID
Safety Notification
Die-Cut Double Face
Die-Cut Gaskets

Non-Adhesive Cutters

Heat Shrink Tubing
Sleeving
Stripping
Seat Belts
Ribbon
Mesh



ELECTRONICS / ELECTRICAL

Tape Dispensers

PCB Masking
Conductive Transfer Tape
Protective Film
Component Mounting
Transformers
Motors
Ballasts
General Coil Winding

Label Dispensers

Board Identification (Barcode)
Product Identification
Humidity/Heat Sensing Dots



RENEWABLES

Tape Dispensers

Charge-Collecting
Acrylic Foam
Dielectric
VHB

Non-Adhesive Cutters

Heat Shrink Tubing
Sleeving
Thin Films

Label Dispensers

Die-Cut Parts
Labels

Let START[®] fit your application



FOOD / BEVERAGE

Tape Dispensers

Safety Seal
Bag Sealing
Box Sealing

Label Dispensers

Product Identification
Logo Placement
Safety Seal
Hang Tabs

Date Codes
Award Labels
Promotional Labels
Nutritional Info Labels



SHOE MANUFACTURING

Tape Dispensers

Cloth Tapes
Double Transfer

Non-Adhesive Cutters

Ribbon
Leather
Cloth
Shoelaces
Elastics
Velcro[®]

Label Dispensers

Product ID
Size ID



PACKAGING

Tape Dispensers

Box Sealing
Bag Sealing

Label Dispensers

Product ID
Care Instructions
Logo Placement
RFID



APPLIANCE

Tape Dispensers

Securing Wires and Cables
Securing Loose Parts
Securing Moving Parts
Protective Film
Battery Manufacturing
Bonding, Joining, and Fastening

Label Dispensers

Product ID
Battery Manufacturing
Logo Placement
RFID
Protective Film
Safety Labeling



PHARMACEUTICAL / MEDICAL

Tape Dispensers

Safety Seal
RFID

Label Dispensers

Product Identification
Safety Seal

Let START® Fit Your Application

As a guide, we have paired some of the most commonly used tapes on the market along with the most popular Tape Dispensers in our product line. As there are different thicknesses, different widths, different adhesives, different brands, and different required cut lengths, all materials may

not perform in the same manner. If you are not sure your material will work properly with our machines, please call and ask one of our Material Dispensing Specialists (MDS) or please visit page 34 for our **Material Evaluation Form**. We will gladly test your material for compatibility.

TAPE COMPATIBILITY CHART FOR START® DISPENSERS

TAPE MATERIAL	zcM0300	zcM0800	zcM1000	zcM1100	TDA025	TDA080	TDA080-NS	TDA080-NM	TDA150	TDA150-NS	TDA150-NM
Duct / Cloth						●	●		●	●	
Filament Reinforced			●	●	●	●	●		●	●	
Foam & VHB							●			●	
Foil			●	●	●	●		●	●		●
Glass Cloth			●	●	●	●	●		●	●	
Kapton® / Polyimide	●	●	● ₁	● ₁	●						
Mylar® / Polyester	●	●	●	●	●	● ₂	● ₂		● ₂	● ₂	
Paper / Masking	●	●	●	●	●	●	●		●	●	
PET		●	●	●	●	●	●		●	●	
Polyethylene / Acrylic								● ₃			● ₃
Polypropylene	●	●	●	●	●	● ₄					
Teflon® / PTFE	● ₅	● ₅	●	●	●	●	●		●	●	
Rubber / Silicone			● ₆	● ₆		● ₆	● ₆		● ₆	● ₆	
Tensitized Polypropylene			●	●	●	●	●		●	●	
Vinyl			●	●	●	●	●		●	●	

Footnotes:
 1. These materials may work on standard dispensers, yet our "K" modification is suggested when using Kapton®. 2. Thicker Polyester materials work better on these dispensers. 3. These dispensers were recommended specifically for surface protection tapes. If you are not using surface protection tapes your options for dispensers are larger. 4. This dispenser is ok to use with lengths less than 3". If you are using longer lengths it is suggested to use an ionizer in front of the machine. Dispensing is not a problem, but this type of tape generates a lot of static. 5. Glass-fiber reinforced and high-unwind tapes are not recommended for these dispensers. Thin films work better. 6. The Mylar® liner needs to remain on the material when dispensing and it is suggested to use our material guide accessory.

SEE OUR MACHINES
 IN ACTION ON **YouTube**



www.YouTube.com/STARTINTL

Imitated. Never Replicated.



USABILITY

Easy set-up and operation, with virtually no training needed.



PRECISION

Each piece is cut cleanly for accurate and attractive tape presentation.



EFFICIENCY

Increase productivity and reduce material costs.



VERSATILITY

Thousands of tapes can be dispensed on our machines for use in a variety of applications.

PROVEN MATERIALS FOR OUR TAPE DISPENSERS



MYLAR®



VHB®



APPLIANCE
FILAMENT



STRAPPING



TENSILIZED
POLYPROPYLENE



ALUMINUM FOIL



POLYESTER
MASKING



KAPTON®

Jorge J.



Kristin S.



Look for the START®
holographic seal to ensure
product authenticity!



Electric

Additional info for zcM1000

- Photocell actuated feed & cut or push-button feed & cut
- Guillotined cut for a straight edge piece of tape
- LED Digital length adjustment
- Manual override of preset lengths
- Blades good for up to 200,000 cuts (dependent on type of material)
- Steel frame for durability
- Cabinet made from flame retardant antistatic composite (auto ignition of 896°F/480°C)
- Comes with a 3-in-1 core (1" (25mm), 1.4" (35mm), 3" (76mm))
- Adjustable pressure roller for various thicknesses of tape
- Accuracy of tape length is +/- .04" (1mm) (dependent on type of material)
- Many available accessories fit this machine. See Accessories section.
- All 230V machines are CE Certified
- Made in Japan



Accessory Options

See page 30 or visit <http://STARTinternational.com/en/products/accessories>

Visit www.youtube.com/user/startintl to see our dispensers in action.

For 230V machines, please add "-2" to the end of the model number. (Example: zcM1000-2)

Unparalleled Performance For 30 Years



zcM1000

Electric Tape Dispenser

- Ideal for medium to high production of repetitive taping for industrial applications
- Program a defined length and automatically advance and cut tape
- Accepts tape widths from .28" to 2" (7 to 51mm)
- Cuts tape lengths from .79" to 39" (20 to 999mm)

Features

3-IN-1 CORE HOLDER



EASY TO OPERATE



Applications



zcM1000E

For Dispensing Two Rolls of Tape

- Cutting head with dual photo sensors/dual core for dispensing two rolls of tape
- Accepts tape widths from .28" to 2" (7 to 51mm)
- Cuts tape lengths from .79" to 39" (20 to 999mm)

MODEL #	Tape Width	Cut Length	Max. Outside Dia. of Roll	3-in-1 Core Holder	Accuracy of Cut*	Feed Speed*	Length Setting	Weight	Dimensions
zcM1000	.28" to 2.0" (7 to 51mm)	.79" to 39" (20 to 999mm)	7" (178mm)	1", 1.4", 3" (25, 35, 76mm)	+/- .04" (1mm)	5.7"/sec 14.5 cm/sec	Digital (LED)	5.6 lbs (2.54 kg)	9.7"(L) x 5.3"(W) x 6.3"(H) 24.5cm(L) x 13.5cm(W) x 16cm(H)

Electrical requirements: 117V 50/60Hz, <1 amp (230V 50/60Hz CE) *Dependent on material

Electric

Call us at 972.248.1999 or email info@startinternational.com for additional info on zcM1000 Modifications

zcM1000B



For Narrow Tapes

- Special advancement roller for extra narrow tapes (1/8" (3mm)) or thin tapes
- Accepts tape widths from .125" to 1" (3 to 25mm)
- Cuts tape lengths from .79" to 39" (20 to 999mm)

zcM1000C



For Glass Cloth Tapes

- Cutting head for flimsy and glass cloth tapes
- Accepts tape widths from .28" to 2" (7 to 51mm)
- Cuts tape lengths from .79" to 39" (20 to 999mm)

zcM1000D



For Extra Short (5mm) Pieces of Tape

- Custom circuit board for minimum length setting of .2"(5mm)
- Accepts tape widths from .28" to 2" (7 to 51mm)
- Cuts tape lengths from .2" to 39" (5 to 999mm)
- Photosensor unable to detect 5mm pieces. Tweezers are suggested for tape removal.

zcM1000F



For Tapes with Rigidity

- Provides straight cuts for stiff or rigid tapes
- Accepts tape widths from .28" to 2" (7 to 51mm)
- Cuts tape lengths from .79" to 39" (20 to 999mm)
- zcM1000P154 pressure roller for rigid tapes

zcM1000K



For Kapton® or Polyimide Film Tapes

- Creaser creates fold for thin tapes that tend to curl
- Accepts tape widths from .5" to 1.1" (12 to 28mm)
- Cuts tape lengths from .79" to 39" (20 to 999mm)
- Tweezers are suggested for tape removal.

zcM1000T



For Thin Tapes

- Special advancement system to help dispense thin tapes
- Accepts tape widths from .28" to 2" (7 to 51mm)
- Cuts tape lengths from .79" to 39" (20 to 999mm)

zcM1000NM



For Protective Film

- Special non-marking advancement rollers for protective films
- Accepts tape widths from .28" to 2" (7 to 51mm)
- Cuts tape lengths from .79" to 39" (20 to 999mm)

zcM1000NS



For Double-Sided and VHB™ Tapes

- Special advancement roller for double-sided and VHB™ tapes
- Accepts tape widths from .28" to 2" (7 to 51mm)
- Cuts tape lengths from .79" to 39" (20 to 999mm)

To determine the best products for your tapes and applications, START International offers a free Material Evaluation. Details can be found on page 32.



Accessory Options

See page 30 or visit <http://STARTinternational.com/en/products/accessories>

For 230V machines, please add "-2" to the end of the model number. (Example: zcM1000-2)

Electric

Additional info for zcM1100

- Photocell actuated feed & cut or push-button feed & cut
- Guillotined cut for a straight edge piece of tape
- LED Digital length adjustment
- Manual override of preset lengths
- Blades good for up to 200,000 cuts (dependent on type of material)
- Steel frame for durability
- Cabinet made from flame-retardant antistatic composite (auto ignition of 896° F/ 480°C)
- Comes with a 3-in-1 core (1" (25mm), 1.4" (35mm), 3" (76mm))
- Adjustable pressure roller for different thicknesses of tape
- Accuracy of tape length is +/- .04" (1mm) (dependent on type of material)
- Many available accessories fit this machine. See Accessories section.
- All 230V machines are CE Certified
- Made in Japan

Suggested accessory:

zcM1000P026

External Reel Stand –
Max. OD 9.45" (240mm)

See Accessories Page 30



For the zcM1100 and the zcM2200, the B, K, T, NM and NS modifications are now available.

For 230V machines, please add "-2" to the end of the model number. (Example: zcM1100-2)

zcM1100

Electric Tape Dispenser with Safety Guard Cutting Head

- Safety guard system prevents activation of cutter when foreign objects are present (fingers, tools, etc.)
- Ideal for medium to high production of repetitive taping for industrial applications
- Program a defined length and automatically advance and cut tape
- Accepts tape widths from .28" to 2" (7 to 51mm)
- Cuts tape lengths from 1.2" to 39" (30 to 999mm)



Safety Mechanism



While it is not recommended to place foreign objects in the cutting area, the zcM1100 and zcM2200 are inoperable when the cutting head is obstructed.

MODEL #	Tape Width	Programmable Memory	Cut Length	Max. Outside Dia. of Roll	3-in-1 Core Holder	Accuracy of Cut*	Length Setting	Weight	Dimensions
zcM1100	.28" to 2.0" (7 to 51mm)	1	1.2" to 39" (30 to 999mm)	7" (178mm)	1", 1.4", 3" (25, 35, 76mm)	+/- .04" (1mm)	digital (LED)	6 lbs (2.72 kg)	9.8"(L) x 5.3"(W) x 6.5"(H) 25cm(L) x 13.5cm(W) x 16.5cm(H)

Electrical requirements: 117V 50/60Hz, <1 amp (230V 50/60Hz CE) *Dependent on material

Electric

zcM2000

Electric Tape Dispenser with Multiple Programmable Tape Lengths

- Program 3 defined lengths and automatically advance and cut tape; zcM2000X features 10 defined lengths
- Two operating modes: on-demand lengths or consecutive
- Accepts tape widths from .28" to 2" (7 to 51mm)
- Cuts tape lengths from .79" to 39" (20 to 999mm)



Example: 30, 45, 60mm

zcM2200

Electric Tape Dispenser with Safety Guard Cutting Head and 3 Programmable Tape Lengths

- Safety guard system prevents activation of cutter when foreign objects are present (fingers, tools, etc.)
- Program 3 defined lengths and automatically advance and cut tape
- Ideal for medium to high production of repetitive taping for industrial applications
- Two operating modes: on-demand lengths or consecutive
- Accepts tape widths from .28" to 2" (7 to 51mm)
- Cuts tape lengths from 1.2" to 39" (30 to 999mm)



Accessory Options

See page 30 or visit <http://STARTinternational.com/en/products/accessories>

For 230V machines, please add "-2" to the end of the model number. (Example: zcM2200-2)

MODEL #	Tape Width	Programmable Memory	Cut Length	Max. Outside Dia. of Roll	3-in-1 Core Holder	Accuracy of Cut*	Length Setting	Weight	Dimensions
zcM2000	.28" to 2.0" (7 to 51mm)	3	.79" to 39" (20 to 999mm)	7" (178mm)	1", 1.4" 3" (25, 35, 76mm)	+/- .04" (1mm)	digital (LED)	5.6 lbs (2.54 kg)	9.7"(L) x 5.3"(W) x 6.3"(H) 24.5cm(L) x 13.5cm(W) x 16cm(H)
zcM2200	.28" to 2.0" (7 to 51mm)	3	1.2" to 39" (30 to 999mm)	7" (178mm)	1", 1.4" 3" (25, 35, 76mm)	+/- .04" (1mm)	digital (LED)	6 lbs (2.72 kg)	9.8"(L) x 5.3"(W) x 6.5"(H) 25cm(L) x 13.5cm(W) x 16.5cm(H)

Electrical requirements: 117V 50/60Hz, <1 amp (230V 50/60Hz **CE**) *Dependent on material

Electric

Additional info for TDA080

- Heavy-duty metal construction
- All-metal gears and advancement rollers
- 4 modes of operation: manual feed-manual cut, manual feed and cut, autofeed and cut and interval feed and cut
- Guillotined cut for a straight edge piece of tape
- Digital push switch display for easy length adjustments
- Safety interlock
- Accuracy +/- .04" (1mm) (dependent on type of tape)
- 9" (229mm) maximum outside diameter roll
- Comes with 3" (76mm) diameter core
- Optional foot switch available, see Accessories section
- Anti-static brush option
- All 230V machines are CE Certified
- Engineered in USA

Suggested accessory:

TDSTAND03
Max. OD 20" (508mm)

See Accessories Page 31



For 230V machines, please add "-2" to the end of the model number. (Example: TDA080-2)

Designed for the Most Demanding Production Environments



TDA080

Electric "Heavy-Duty" Tape Dispenser

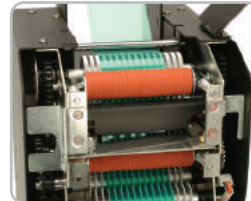
- Ideal for high production of repetitive taping for industrial applications
- Program a defined length and automatically advance and cut tape
- Accepts tape widths from .25" (6mm) to 3.15" (80mm)
- Cut lengths from 1.6" (40mm) to 394" (9999mm)

Features

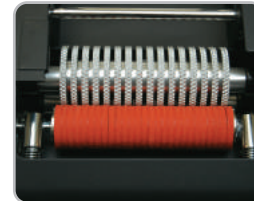
4 OPERATING MODES



SOLID CONSTRUCTION, STEEL GEARS



STANDARD ROLLERS



Applications

PAINT MASKING



MOTOR MANUFACTURING



PROTECTIVE FILM



MODEL #	Tape Width	Cut Length	Max. Outside Dia. of Roll	Core Diameter	Accuracy of Cut*	Feed Speed*	Weight	Footprint	Dimensions
TDA080	.25" to 3.15" (6 to 80mm)	1.6" to 394" (40 to 9999mm)	9" (228mm)	3" (76mm)	+/- .04" (1mm)	6.6"/sec (16.8cm/sec)	24 lbs (10.9kg)	9.25"(L) X 6.75"(W) (235 X 172mm)	10.1"(L) x 6.625"(W) x 14.25"(H) 25.7cm(L) x 16.8cm(W) x 36.2cm(H)

Electrical requirements: 115V 50/60Hz <2 amps (230V 50/60Hz CE) *Dependent on material. **Dimensions for TDA080-LAM and TDA080-LR are larger than other TDA080s. Please call for exact specifications.

Electric

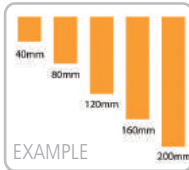
TDA080-M

Programmable 5 Length Memory

- Program up to 5 lengths into memory and automatically advance and cut tape
- Ideal for high production of repetitive taping for industrial applications
- Accepts tape widths from .25" (6mm) to 3.15" (80mm)
- Cuts lengths from 1.6" (40mm) to 394" (9999mm)



PROGRAMMABLE 5 LENGTH MEMORY



TDA080-NS

For FOAM Tapes

- Special Non-Stick tape advancement rollers for Foam and High Tack tapes
- Ideal for high production of repetitive taping for industrial applications
- Program a defined length and automatically advance and cut tape
- Accepts tape widths from .25" (6mm) to 3.15" (80mm)
- Cut lengths from 1.6" (40mm) to 394" (9999mm)
- Maximum material thickness: .125" (3mm) foam, .0625" (1.5mm) VHB®. Materials beyond the specification must be tested; See Material Evaluation form on Page 32.
- Machine shown with optional reel stand (TDSTAND03 - See Page 31)



COATED ROLLERS



TDA080-NM

For Protective Films

- Special Non-Marking tape advancement rollers for protective films and foil tapes
- Ideal for high production of repetitive taping for industrial applications
- Program a defined length and automatically advance and cut tape
- Accepts tape widths from .25" (6mm) to 3.15" (80mm)
- Cut lengths from 1.6" (40mm) to 394" (9999mm)



SMOOTH ROLLERS



TDA080-NM-NS

For Foil Tapes

- Special Non-Marking & Non-Stick advancement rollers for High Tack foil tapes
- Ideal for high production of repetitive taping for industrial applications
- Two operating modes: on-demand lengths or consecutive
- Program a defined length and automatically advance and cut tape
- Accepts tape widths from .25" (6mm) to 3.15" (80mm)
- Cut lengths from 1.6" (40mm) to 394" (9999mm)



TDA080-LR

For Tapes on a Liner

- Modified TDA080 with additional liner remover to remove inside liner of aluminum and other lined tapes
- Ideal for high production of repetitive taping for industrial applications
- Program a defined length and automatically advance and cut tape
- Accepts tape widths from .25" (6mm) to 2" (50mm)
- Cut lengths from 1.6" (40mm) to 394" (9999mm)
- Liner remover 5.5" max OD Tape, 1.8" take-up hub



TDA080-LAM

Laminator Feature

- Modified TDA080 which laminates two rolls of tape together
- Ideal for high production of repetitive taping for industrial applications
- Laminates, dispenses, and cuts tape to predetermined definite lengths
- Accepts tape widths from .25" (6mm) to 2" (50mm)
- Cut lengths from 1.6" (40mm) to 394" (9999mm)



Additional info for

TDA080 Modifications

- Heavy-duty metal construction
- All-metal gears and advancement rollers
- 4 modes of operation: manual feed-manual cut, manual feed and cut, auto feed and cut and interval feed and cut
- Guillotined cut for a straight edge piece of tape
- Digital push-switch display for easy length adjustments
- Safety interlock
- Accuracy +/- .04" (1mm) (dependent on type of tape)
- 9" (229mm) maximum outside diameter roll
- Comes with 3" (76mm) diameter core
- Anti-static brush option
- All 230V machines are CE Certified
- Engineered in USA

To determine the best products for your tapes and applications, START International offers a free Material Evaluation. Details can be found on page 32.

Suggested accessory:
TDSTAND03
Max. OD 20" (508mm)
See Accessories Page 31

For 230V machines, please add "-2" to the end of the model number. (Example:TDA080-NS-2)

Electric

Heavy-Duty Wide Tape Dispensers

Additional info for TDA150

- Heavy-duty metal construction
- All-metal gears and advancement rollers
- 4 modes of operation: manual feed-manual cut, manual feed and cut, auto feed and cut, and interval feed and cut
- Guillotined cut for a straight edge piece of tape
- Digital push-switch display for easy length adjustments
- Safety interlock
- Accuracy +/- .04" (1mm) (dependent on type of tape)
- 9" (251mm) maximum outside diameter roll
- Comes with 3" (76mm) diameter core
- For Super-Speed Dispensing of Tapes (13.2" per second) order Model # TDA150-FM
- All 230V machines are **CE** Certified
- Engineered in USA

Suggested accessory:
TDSTAND03
Max. OD 20" (508mm)
See Accessories Page 31



For 230V machines, please add "-2" to the end of the model number. (Example: TDA150-2)



TDA150

Electric "Heavy-Duty" Tape Dispenser – 150mm Wide

- Ideal for high production of repetitive taping for industrial applications
- Program a defined length and automatically advance and cut tape
- Accepts tape widths from .25" to 5.9" (6 to 150mm)
- Cuts lengths from 1.6" to 394" (40 to 9999mm)



TDA150-NS

- Modified TDA150 with special tape advancement rollers **for foam and high tack tapes**
- Maximum material thickness: .125" (3mm) foam, .0625" (1.5mm) VHB®. Materials beyond the specification must be tested; See Material Evaluation form on Page 32



TDA150-NM

- Modified TDA150 with special non-marking advancement rollers **for protective films and foil tapes**
- Ideal for high production of repetitive taping for industrial applications

MODEL #	Tape Width	Cut Length	Max. Outside Dia. of Roll	Core Diameter	Accuracy of Cut*	Feed Speed*	Weight	Dimensions
TDA150	.25" to 5.9" (6 to 150mm)	1.6" to 394" (40 to 9999mm)	9" (220mm)	3" (76mm)	+/- .040" (+/- 1mm)	6.6"/sec (16.8cm/sec)	37 lbs (16.8 kg)	10.25" (L) x 13" (W) x 14" (H) 26.0cm (L) x 33.0cm (W) x 35.6cm (H)
TDA150-FM	.25" to 5.9" (6 to 150mm)	1.6" to 394" (40 to 9999mm)	9" (220mm)	3" (76mm)	+/- .040" (+/- 1mm)	13.2"/sec (33.5cm/sec)	37 lbs (16.8 kg)	10.25" (L) x 13" (W) x 14" (H) 26.0cm (L) x 33.0cm (W) x 35.6cm (H)

Electrical requirements: 115V 50/60Hz <2 amps (230V 50/60Hz **CE**) *Dependent on material.

Specialty

Electric

TDA025B

Electric Carousel Tape Dispenser

- Ideal for multi-operator applications
- Automatically feeds and cuts tape to a definite length
- Unique feed system places tape on carousel for easy removal
- Accepts tape widths from .12" to .98" (3 to 25mm)
- Cuts lengths from .6" to 2.76" (15 to 70mm)

Features

PHOTOSENSOR ACTUATION ONE-TOUCH ROTATION



Additional info for TDA025B

- Allows up to 20 pieces of tape to be cut at the touch of a button
- Accepts many different core diameter tapes
- Safety switch on cover
- Small footprint
- Photosensor
- Three cut modes: automatic, semi-automatic and manual
- 5.9" (150mm) maximum outside diameter roll
- Light weight
- All 230V machines are **CE** Certified

Additional info for TDW019

- Simple, compact, and easy to use
- Holes in base to mount to workbench
- Uses any brand of tape
- Maintenance-free design
- Safety blade guard
- 7" (178mm) maximum outside roll diameter
- 1.25" (32mm) tape core provided
- Optional tape cores:
-1.50" (38mm): Part # TDW019-04B
-3" (76mm): Part # TDW019-04C
- Made in the U.S.A.

TDW019

Manual Tape Wrapper

- Efficiently wraps tape around wires, harnesses, bundles, tubing, etc.
- Accepts tape widths from .375" - .75" (9 - 19mm)
- Maximum bundle diameter of 2" (51mm)
- Heavy-duty solid aluminum frame construction



For 230V machines, please add "-2" to the end of the model number. (Example: TDA025B)

MODEL #	Tape Width	Cut Length	Max. Outside Dia. of Roll	Core Diameter	Accuracy of Cut*	Tape Cutter	Feed Type	Adjustable Tape Spacing	Length Setting	Weight
TDA025B	.12" to .98" (3 to 25mm)	.6" to 2.76" (15 to 70mm)	5.9" (150mm)	universal	.08" (2mm)	automatic	carousel	yes	manual	4.2 lbs (1.9 kg)

Dimensions: 10.2"(L) x 5"(W) x 5.9"(H) 25.9cm(L) x 12.7cm(W) x 15cm(H) Electrical requirements: 117V 50/60Hz, <1 amp (230V 50/60Hz **CE**) *Dependent on material

	Tape Width	Dia. of Roll	Max. Outside Diameter	Core Diameter	Dimensions	Max. Bundle
TDW019	2" (51mm)	.375" to .75" (9 to 19mm)	7" (178mm)	1.25" (32mm)	5 lbs (2.27kg)	10.5"(L) x 6"(W) x 11.25"(H) 267mm(L) x 152mm(W) x 287mm(H)

Electric / Manual

Additional info for TDLR050B, TDLR050-10 & TDLR050-15

- Dispenses and cuts lined tapes as it peels and winds the liner
- Uses 3" (76mm) core
- Heavy-duty metal base
- Functions as a single unit or along with our electric tape dispensers for maximum efficiency. Please call for details.

Additional info for zcM0800

- Comes with 1" (25mm) and 3" (76mm) cores
- Available with optional AC adaptor
- Tape is cut by raising and pulling up across a serrated blade, which activates a switch to advance the next piece of tape
- Battery-operated or AC adaptor-operated

Additional info for zcM0300

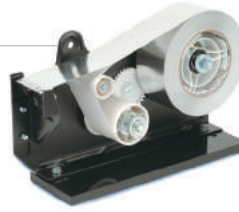
- Easy lever adjustment to set length of tape
- Tape is cut by pulling up across a serrated blade
- Heavy base for stability
- Easy to load tape
- Maximum outside diameter of roll is 4.75" (120mm)
- Comes with a 3" (76mm) core

Liner Removers

TDLR050B

6" Diameter Liner Remover and/or Tape Dispenser

- Excellent for foil tapes with an inside liner
- Will handle up to 2" (51mm) wide tapes



TDLR050-10

10" Diameter Liner Remover and/or Tape Dispenser

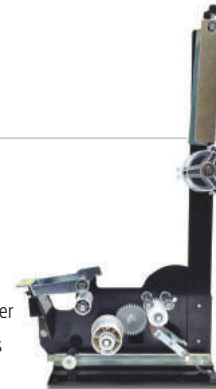
- Excellent for foil tapes with an inside liner
- Will handle up to 2" (51mm) wide tapes
- 10" maximum outside diameter roll



TDLR050-15

15" Diameter Liner Remover and/or Tape Dispenser

- Excellent for foil tapes with an inside liner
- Will handle up to 2" (51mm) wide tapes
- 15" maximum outside diameter roll



Light-Duty Tape Dispensers

zcM0800

Electric Tape Dispenser

- Ideal entry-level dispenser for low to medium production with thin film tape
- Automatically advances tape, manual cut
- Dispenses tape from .25" (6mm) to 1" (25mm) in width 3 fixed lengths: 1.18" (30mm), 1.77" (45mm), 3.54" (90mm)
- Three D-sized batteries required (not included)
- Universal 100-240V AC Adapter available with zcM0800-WT model



zcM0300

Manual Tape Dispenser with Hand Lever

- Ideal for low-volume production
- Definite length tape dispenser
- Dispenses tape from .25" to 1" (6 to 25mm) in width
- Dispenses tape from .50" to 4" (13 to 102mm) in length with a single pull



MODEL #	Tape Width	Max. Roll Diameter	Type Gear Drive	Core Diameter	Dimensions	Weight
TDLR050B	Up to 2" (51mm)	6" (152mm)	gear	3" (76mm)	11.25"(L) x 3.50"(W) x 7.00"(H) 285mm(L) x 89mm(W) x 178mm(H)	6.50 lbs (2.94 kg)
TDLR050-10	Up to 2" (51mm)	10" (254mm)	gear	3" (76mm)	8"(L) x 17"(W) x 11"(H) 204mm(L) x 432mm(W) x 280mm(H)	22 lbs (9.98 kg)
TDLR050-15	Up to 2" (51mm)	15" (381mm)	gear	3" (76mm)	7.25"(L) x 11"(W) x 21"(H) 185mm(L) x 280mm(W) x 534mm(H)	13 lbs (5.90 kg)

MODEL #	Tape Width	Cut Length	Max. Outside Dia. of Roll	Core Diameter	Tape Cutter	Feed Type	115V AC Adapter	Dimensions	Weight
zcM0800	.25" to 1" (6 to 25mm)	1.18", 1.77" & 3.54" (30, 45, 90mm)	5.3" (135mm)	1" & 3" (25 & 76mm)	manual	automatic	optional	6.97"(L) x 3.78"(W) x 4.53"(H) 177mm(L) x 96mm(W) x 115mm(H)	2.7 lbs (1.23 kg)
zcM0300	.25" to 1" (6 to 25mm)	.50" to 4.00" (13 to 102mm)	4.75" (120mm)	3" (76mm)	manual	hand lever	N/A	6.25"(L) x 3.5"(W) x 4.88"(H) 160mm(L) x 90mm(W) x 120mm(H)	3.2 lbs (1.45 kg)

D-sized batteries not included. Weight is shown without batteries.

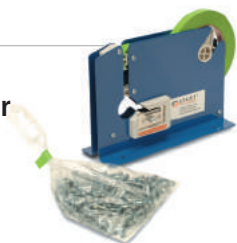
TAPE Dispensers

Manual

SL7605K

Manual Bag Sealer with Cutter

- All-metal construction
- Automatically measures and cuts tape
- Places a flag of tape around the bundled end of a bag



SL7336

3" (76mm) Multi-Roll Manual Tape Dispenser

- Ability to dispense three 1" (25mm) rolls of tape
- Tiered metal bars help guide and separate tape rolls
- Comes with 3" (76mm) cores



SL7606

Stainless Steel Manual Bag Sealer with Cutter

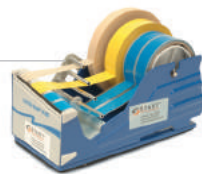
- Stainless steel construction
- Automatically measures and cuts tape
- Places a flag of tape around the bundled end of a bag



SL7346

4" (102mm) Multi-Roll Manual Tape Dispenser

- Ability to dispense four 1" (25mm) rolls of tape
- Tiered metal bars help guide and separate tape rolls
- Comes with 3" (76mm) cores



SL7808K

Wide-Neck Manual Bag Sealer with Cutter

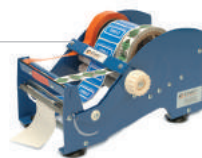
- Designed for larger or thicker bags
- All-metal construction
- Automatically measures and cuts tape
- Places a flag of tape around the bundled end of a bag



SL9506

6" (152mm) wide – Multi-Use Manual Tape and Label Dispenser

- Dispenses tape and labels
- 6" (152mm) wide dispenser
- Multi-roll capacity
- Heavy-duty steel frame



SL9512

12" (305mm) wide – Multi-Use Manual Tape and Label Dispenser

- Dispenses tape and labels
- 12" (305mm) wide dispenser
- Multi-roll capacity
- Heavy-duty steel frame



SL7326

2" (51mm) Multi-Roll Manual Tape Dispenser

- Ability to dispense two 1" (25mm) rolls of tape
- Tiered metal bars help guide and separate tape rolls
- Comes with 3" (76mm) cores



SL9518

18" (457mm) wide – Multi-Use Manual Tape and Label Dispenser

- Dispenses tape and labels
- 18" (457mm) wide dispenser
- Multi-roll capacity
- Heavy-duty steel frame



Additional info for SLK7605K, SL7606 & SL7808K

- Use any thin polyester or reinforced paper tapes
- Eliminate twist tying
- Heat-treated steel blade
- Bag trimmer
- Pre-drilled holes in base for mounting to work surfaces
- Compact design
- No assembly or maintenance required
- Comes with a 3" (76mm) core

Additional info for SL7326, SL7336 & SL7346

- Heavy-duty steel frame
- Non-skid weighted rubber base
- Serrated blade
- Baked enamel finish

Additional info for SL9506, SL9512 & SL9518

- Serrated cutting blade
- Works with die-cut and butt-cut labels
- Can use up to a 6" (152mm) diameter roll
- Dividers adjust to separate rolls
- Ability to change individual rolls
- Rubber suction base
- Baked enamel finish
- Use any size core

MODEL #	Max. Tape Width	Slot Opening	Max. Outside Diameter of Tape	Dimensions	Weight
SL7605K	.375" (9mm)	.375" (9mm)	6" (152mm)	8.622"(L) x 2.91"(W) x 6"(H) 219mm(L) x 74mm(W) x 152mm(H)	2.33 lbs (1.06 kg)
SL7606	.375" (9mm)	.375" (9mm)	6" (152mm)	8.622"(L) x 2.91"(W) x 6"(H) 219mm(L) x 74mm(W) x 152mm(H)	2.33 lbs (1.06 kg)
SL7808K	.79" (20mm)	.625" (16mm)	7" (178mm)	10"(L) x 3.34"(W) x 8.24"(H) 254mm(L) x 85mm(W) x 209mm(H)	3.75 lbs (1.70 kg)
MODEL #	Max. Roll Width	Max Outside Dia. of Roll	Dimensions		Weight
SL7326	2" (51mm)	6" (152mm)	9.375"(L) x 2.750"(W) x 5.250"(D) 238mm(L) x 69mm(W) x 133mm(D)		3.27 lbs (1.48 kg)
SL7336	3" (76mm)	6" (152mm)	9.375"(L) x 3.500"(W) D 5.250"(D) 238mm(L) x 89mm(W) x 133mm(D)		3.96 lbs (1.80 kg)
SL7346	4" (102mm)	6" (152mm)	9.375"(L) x 4.750"(W) x 5.250"(D) 238mm(L) x 121mm(W) x 133mm(D)		4.85 lbs (2.20 kg)
SL9506	6" (152mm)	6" (152mm)	12.315"(L) x 8.750"(W) x 7.000"(H) 339mm(L) x 222mm(W) x 177mm(H)		6.76 lbs (3.07 kg)
SL9512	12" (305mm)	6" (152mm)	12.315"(L) x 14.625"(W) x 7.000"(H) 339mm(L) x 371mm(W) x 177mm(H)		9.45 lbs (4.29 kg)
SL9518	18" (457mm)	6" (152mm)	12.315"(L) x 20.750" x 7.000"(H) 339mm(L) x 527mm(W) x 177mm(H)		10.76 lbs (4.88 kg)

LABEL Dispensers



USABILITY

Automatically peel and advance labels without the hassle of peeling by hand.



PRECISION

Maintain precise control over the flow of material for proper peeling. Photosensor allows for accurate detection of labels.



EFFICIENCY

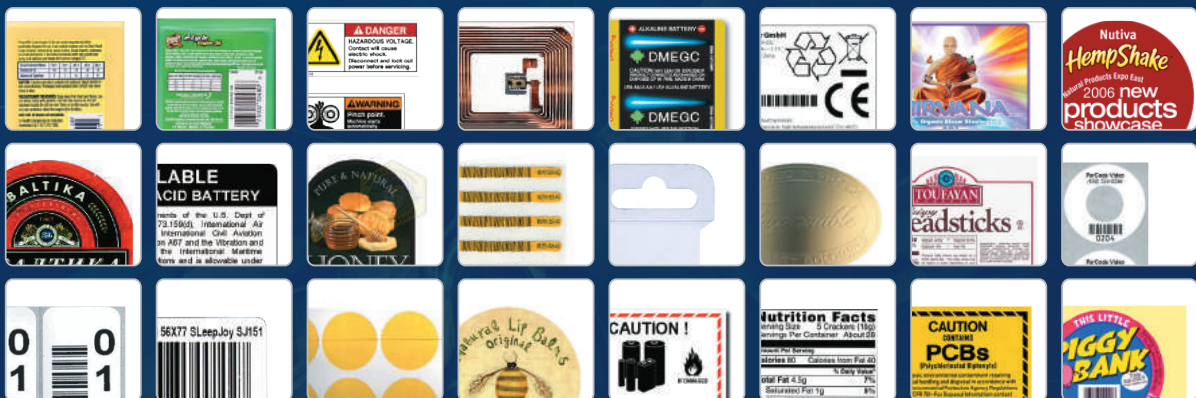
Increase productivity by reducing hand and arm motions.



VERSATILITY

Dispense virtually any size, shape, and material of label, even die-cut parts.

PROVEN MATERIALS FOR OUR LABEL DISPENSERS



Sandy Y. and
Claudia M.



Look for the **START**[®] holographic seal to ensure product authenticity!



Increase Productivity & Maintain Label Integrity

Electric

LD3000

2.25" (57mm) wide — Electric Label Dispenser "HIGH SPEED"

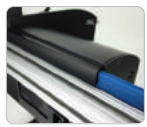
- Ideal for small labels and small work areas
- Automatically peels labels from the liner and advances labels
- New built-in 1/4" bracket for hanging capability for use with workbenches and LDHANGER16 (Reel Holder Arm Extension PRT-019-01 required for LD3000 series)
- Will dispense labels and die-cut parts
- Photosensor accuracy and reliability
- Anodized aluminum construction
- Will dispense labels from .25" to 2.25" (6 to 57mm) in width
- Will dispense labels from .25" to 3" (6 to 76mm) in length
- Works with most clear material



Additional Info for LD3000, LD3000ESD, LD3000FDA and LD3500

- Will accommodate core sizes of 1" (25mm) and 3" (76mm)
- Automatically rewinds liner scrap for a cleaner working environment
- Liner scrap is easily removed
- No tools required for adjusting to different size labels
- No maintenance required
- Made in the U.S.A.

HANGING BRACKET



Patented



LD3000FDA

USDA/FDA Compliant Coating and CFIA Approved

- USDA/FDA compliant coating ideal for food and pharmaceutical industries
- Proprietary coating available for all label dispensers
- Call us at 972.248.1999 or email info@startinternational.com for additional info



LD3500ESD

Electrostatic Dissipative Electric Label Dispenser

- Electrostatic discharge safe
- Used for highly sensitive electronics and is certified to meet electronic industry standards



LD3500

For Clear Materials

- Dispenses Clear, Tamper Evident, Carton Sealing Labels and other challenging clear materials
- Vertical strip plate provides improved photosensor adjustability for detection of clear materials



Suggested accessory:
LDPBATTERY
Rechargeable External Battery Pack

See Accessories Page 31

MODEL #	Liner Capacity Width	Length	Roll Capacity	Feed Speed*	Dimensions	Electrical Requirements	Weight
LD3000 LD3000ESD LD3000FDA	.25" to 2.25" (6mm to 57mm)	.25" to 3" (6mm to 76mm)	7.5" (19.1cm)	2.2"/sec* (5.6cm/sec.)	7.0"(L) x 6.1"(W) x 10.7"(H) 17.8cm(L) x 15.5cm(W) x 27.2cm(H)	12V DC with Universal transformer, 100V - 240V AC	2.8 lbs (1.27 kg)
LD3500	.25" to 2.25" (6mm to 57mm)	.25" to 4" (6mm to 102mm)	7.5" (19.1cm)	2.2"/sec* (5.6cm/sec.)	7.0"(L) x 6.1"(W) x 10.7"(H) 17.8cm(L) x 15.5cm(W) x 27.2cm(H)	12V DC with Universal transformer, 100V - 240V AC	2.8 lbs (1.27 kg)

*Feed Speed calculated at take-up hub origin. Feed Speed will increase as material dispenses. Speed calculated at 60Hz.

LABEL Dispensers

Electric

Additional info for LD6050

- Will dispense labels and die-cut parts
- Adjustable strip plate for hard-to-release labels
- Will accommodate core sizes of 1" (25 mm) and 3" (76mm)
- Automatically rewinds liner scrap for a cleaner working environment
- Liner scrap is easily removed
- No tools required for adjusting to different size labels
- No maintenance required

Additional info for LD6025

- Will dispense labels and die-cut parts
- Adjustable strip plate for hard-to-release labels
- Will accommodate core sizes of 1" (25 mm) and 3" (76mm)
- Can dispense paper, polyester, vinyl, acetate, foam, foil, etc.
- Automatically rewinds liner scrap for a cleaner working environment
- Liner scrap is easily removed
- No tools required for adjusting to different size labels
- No maintenance required
- All 230V machines are CE Certified

SPECIAL APPLICATIONS

- For clear labels and materials, please select Model # LD6050C or LD6025C

Suggested accessory:
LDHANGER16
16" (40.6cm) wide



See Accessories Page 31

For 230V machines, please add "-2" to the end of the model number. (Example: LD6050-2)

LD6050

4.75" (121mm) wide — Electric Label Dispenser "HIGH SPEED"

- Ideal for virtually any kind of label from bar code to packaging
- Automatically peels and advances labels
- Built-in 1/4" bracket for hanging capability for use with workbenches and LDHANGER16
- Photosensor accuracy and reliability
- Anodized aluminum construction
- High-torque motor for heavy rolls of labels
- Will dispense labels from .25" to 4.75" (6 to 121mm) in width
- Will dispense labels from .50" to 6" (13 to 152mm) in length
- Made in U.S.A.

COMMON MATERIALS



LD6050FDA

USDA/FDA Compliant Coating and CFIA Approved

- USDA/FDA compliant coating ideal for food and pharmaceutical industries



LD6025

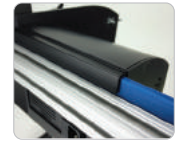
4.75" (121mm) wide — Electric Label Dispenser

- Ideal for short length and tiny bar code labels
- Automatically peels and advances labels
- Built-in 1/4" bracket for hanging capability for use with workbenches and LDHANGER16
- Photosensor accuracy and reliability
- Anodized aluminum construction
- High-torque motor for heavy rolls of labels
- Will dispense labels from .25" to 4.75" (6 to 121mm) in width
- Will dispense labels from .125" to 6" (3 to 152mm) in length
- Made in U.S.A.

COMMON MATERIALS



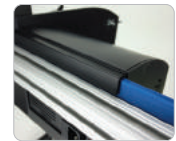
HANGING BRACKET



Patented



HANGING BRACKET



Patented

MODEL #	Liner Capacity	Width	Length	Roll Capacity	Feed Speed*	Dimensions	Electrical Requirements	Weight
LD6025	.25" to 4.75" (6mm to 121mm)		.125" to 6" (3mm to 152mm)	12" (31cm)	1.6"/sec* (3.9cm/sec.)	10.8"(L) x 10.8"(W) x 14.5"(H) 27.4cm(L) x 27.4cm(W) x 36.8cm(H)	100/115V AC, 0.75A 60Hz (220-240V AC, 0.4A 50Hz CE)	7.0 lbs (3.18 kg)
LD6050	.25" to 4.75" (6mm to 121mm)		.50" to 6" (13mm to 152mm)	12" (31cm)	3.3"/sec* (8cm/sec.)	10.8"(L) x 10.8"(W) x 14.5"(H) 27.4cm(L) x 27.4cm(W) x 36.8cm(H)	100/115V AC, 2.5A 60Hz (220-240V AC, 1.8A 50/60Hz CE)	8.8 lbs (3.97 kg)
LD6100	.25" to 4.75" (6mm to 121mm)		.50" to 6" (13mm to 152mm)	12" (31cm)	6.6"/sec* (16.8cm/sec.)	10.8"(L) x 10.8"(W) x 14.5"(H) 27.4cm(L) x 27.4cm(W) x 36.8cm(H)	100/115V AC, 2.5A 60Hz (220-240V AC, 2A 50Hz CE)	8.8 lbs (3.97 kg)

*Feed Speed calculated at take-up hub origin. Feed Speed will increase as material dispenses. Speed calculated at 60Hz.

Electric

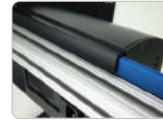
LDX6050

7" (178mm) wide — Electric Label Dispenser "HIGH SPEED"

- Ideal for long and wide packaging type labels
- Automatically peels and advances labels
- Built-in 1/4" bracket for hanging capability for use with workbenches and LDHANGER16
- Photosensor accuracy and reliability
- Anodized aluminum construction
- High-torque motor for heavy rolls of labels
- Will dispense labels from .25" to 7" (6 to 178mm) in width
- Will dispense labels from .50" to 6" (13 to 152mm) in length
- Made in U.S.A. 🇺🇸



HANGING BRACKET



Patented

COMMON MATERIALS



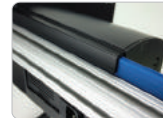
LDX6025

7" (178mm) wide — Electric Label Dispenser

- Ideal for short length and wide bar code labels
- Automatically peels and advances labels
- Built-in 1/4" bracket for hanging capability for use with workbenches and LDHANGER16
- Photosensor accuracy and reliability
- Anodized aluminum construction
- High-torque motor for heavy rolls of labels
- Will dispense labels from .25" to 7" (6 to 178mm) in width
- Will dispense labels from .125" to 6" (3 to 152mm) in length
- Made in U.S.A. 🇺🇸



HANGING BRACKET



Patented

COMMON MATERIALS



Meets UL 60950-1 2nd Ed., CSA C22.2# 60950-1 2nd Ed and IEC 60950-1 2nd Ed Standards.
Certified By Bureau Veritas / Curtiss Straus (OSHA recognized NRTL Laboratory).

Additional info for LDX6025 & LDX6050

- Will dispense labels and die-cut parts
- Adjustable strip plate for hard-to-release labels
- Will accommodate core sizes of 1" (25mm) and 3" (76mm)
- Capable of dispensing labels made of paper, polyester, vinyl, acetate and foil
- Automatically rewinds liner scrap for a cleaner working environment
- Liner scrap is easily removed
- No tools required for adjusting to different size label
- No maintenance required
- All 230V machines are CE Certified

SPECIAL APPLICATIONS

- For clear labels and materials, please select Model # LDX6025C or LDX6050C



Suggested accessory:
LDHANGER16
16" (40.6cm) wide

See Accessories Page 31

For 230V machines,
please add "-2" to the
end of the model number.
(Example: LDX6025-2)

MODEL #	Liner Capacity	Width	Length	Roll Capacity	Feed Speed*	Dimensions	Electrical Requirements	Weight
LDX6025	.25" to 7" (6mm to 178mm)		.125" to 6" (3mm to 152mm)	12" (31cm)	1.6"/sec* (3.9cm/sec.)	10.8"(L) x 13.6"(W) x 14.5"(H) 27.4cm(L) x 34.5cm(W) x 36.8cm(H)	100/115V AC, 0.75A 60Hz (220-240V AC, 0.4A 50Hz CE)	7.8 lbs (3.5 kg)
LDX6050	.25" to 7" (6mm to 178mm)		.50" to 6" (13mm to 152mm)	12" (31cm)	3.3"/sec* (8cm/sec.)	10.8"(L) x 13.6"(W) x 14.5"(H) 27.4cm(L) x 34.5cm(W) x 36.8cm(H)	100/115V AC, 2.5A 60Hz (220-240V AC, 1.8A 50/60Hz CE)	9.6 lbs (4.4 kg)
LDX6100	.25" to 7" (6mm to 178mm)		.50" to 6" (13mm to 152mm)	12" (31cm)	6.6"/sec* (16.8cm/sec.)	10.8"(L) x 13.6"(W) x 14.5"(H) 27.4cm(L) x 34.5cm(W) x 36.8cm(H)	100/115V AC, 2.5A 60Hz (220-240V AC, 2A 50Hz CE)	9.6 lbs (4.4 kg)

*Feed Speed calculated at take-up hub origin. Feed Speed will increase as material dispenses. Speed calculated at 60Hz.

Electric

Additional info for LD8025, LD8050 & LD8100

- Will dispense labels and die-cut parts
- Adjustable strip plate for hard-to-release labels
- Will accommodate core sizes of 1" (25mm) and 3" (76mm)
- Capable of dispensing labels made of paper, polyester, vinyl, acetate and foil
- Automatically rewinds liner scrap for a cleaner working environment
- Liner scrap is easily removed
- No tools required for adjusting to different size label
- No maintenance required
- Lightweight frame
- All 230V machines are CE Certified

SPECIAL APPLICATIONS

- For clear labels, please select Model # LD8025C or LD8050C

For 230V machines, please add "-2" to the end of the model number. (Example: LD8050-2)



LD8050

5" (127 mm) wide — Electric Label Dispenser "HIGH SPEED"

- Ideal for long, packaging-type labels
- Automatically peels and advances labels
- Photosensor accuracy and reliability
- Powder-coated aluminum construction
- High-torque motor for heavy rolls of labels
- Will dispense labels from .25" to 5" (6 to 127mm) in width
- Will dispense labels from .5" to 12" (13 to 305mm) in length
- LD8050 dispenses labels up to 3.9"/seconds*
- Made in U.S.A.



COMMON MATERIALS



LD8100

5" (127mm) wide — Electric Label Dispenser "SUPER SPEED"

- Ideal for long, packaging-type labels
- Automatically peels and advances labels
- Photosensor accuracy and reliability
- Powder-coated aluminum construction
- High-torque motor for heavy rolls of labels
- Will dispense labels from .25" to 5" (6 to 127mm) in width
- Will dispense labels from .5" to 12" (13 to 305mm) in length
- LD8100 dispenses labels up to 7.8"/seconds*
- Made in U.S.A.



MODEL #	Liner Capacity Width	Length	Roll Capacity	Feed Speed*	Dimensions	Electrical Requirements	Weight
LD8025	.25" to 5" (6 to 127mm)	.125" to 12" (3 to 305mm)	12" (305mm)	2"/seconds* (5.1cm/sec.)	14.4"(L) x 11.9"(W) x 10.4"(H) 36.6(L) x 30.2(W) x 27.7cm(H)	100/115V AC, 0.75A 60Hz (220-240V AC, 0.4A 50Hz CE)	9.75 lbs (4.4 kg)
LD8050	.25" to 5" (6 to 127mm)	.5" to 12" (13 to 305mm)	12" (305mm)	3.9"/seconds* (10cm/sec.)	14.4"(L) x 11.9"(W) x 10.4"(H) 36.6(L) x 30.2(W) x 27.7cm(H)	100/115V AC, 2.5A 60Hz (220-240V AC, 1.8A 50/60Hz CE)	11.55 lbs (5.2 kg)
LD8100	.25" to 5" (6 to 127mm)	.5" to 12" (13 to 305mm)	12" (305mm)	7.8"/seconds* (19.8cm/sec.)	14.4"(L) x 11.9"(W) x 10.4"(H) 36.6(L) x 30.2(W) x 27.7cm(H)	100/115V AC, 2.5A 60Hz (220-240V AC, 2A 50Hz CE)	11.55 lbs (5.2 kg)

*Feed Speed calculated at take-up hub origin. Feed Speed will increase as material dispenses. Speed calculated at 60Hz.



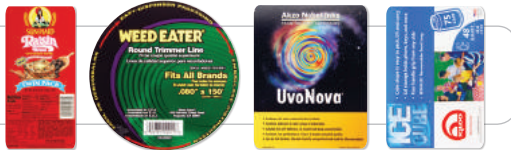
LDX8050

8" (203 mm) wide — Electric Label Dispenser "HIGH SPEED"

- Ideal for long and wide packaging-type labels
- Automatically peels and advances labels
- Photosensor accuracy and reliability
- Powder-coated aluminum construction
- High-torque motor for heavy rolls of labels
- Will dispense labels from .25" to 8" (6 to 203mm) in width
- Will dispense labels from .5" to 12" (13 to 305mm) in length
- LDX8050 dispenses labels up to 3.9"/seconds*
- Made in U.S.A.



COMMON MATERIALS



LDX8100

8" (203mm) wide — Electric Label Dispenser "SUPER SPEED"

- Ideal for long and wide packaging-type labels
- Automatically peels and advances labels
- Photosensor accuracy and reliability
- Powder-coated aluminum construction
- High-torque motor for heavy rolls of labels
- Will dispense labels from .25" to 8" (6 to 203mm) in width
- Will dispense labels from .5" to 12" (13 to 305mm) in length
- LDX8100 dispenses labels up to 7.8"/seconds*
- Made in U.S.A.



Meets UL 60950-1 2nd Ed., CSA C22.2# 60950-1 2nd Ed and IEC 60950-1 2nd Ed Standards. Certified By Bureau Veritas / Curtis Straus (OSHA recognized NRTL Laboratory).

Electric

Additional info for LDX8025, LDX8050 & LDX8100

- Will dispense labels and die-cut parts
- Adjustable strip plate for hard-to-release labels
- Will accommodate core sizes of 1" (25mm) and 3" (76mm)
- Capable of dispensing labels made of paper, polyester, vinyl, acetate and foil
- Automatically rewinds liner scrap for a cleaner working environment
- Liner scrap is easily removed
- No tools required for adjusting to different size label
- No maintenance required
- Lightweight frame
- All 230V machines are Certified

SPECIAL APPLICATIONS

- For clear labels, please select Model # LDX8025C or LDX8050C


For 230V machines, please add "-2" to the end of the model number. (Example: LDX8050-2)

MODEL #	Liner Capacity Width	Length	Roll Capacity	Feed Speed*	Dimensions	Electrical Requirements	Weight
LDX8025	.25" to 8" (6 to 203mm)	.125" to 12" (3 to 305mm)	12" (305mm)	2"/sec* (5.1cm/sec.)	14.4"(L) x 14.9"(W) x 10.4"(H) 36.6(L) x 37.8(W) x 27.7cm(H)	100/115V AC, 0.75A 60Hz (220-240V AC, 0.4A 50Hz	11.00 lbs (5 kg)
LDX8050	.25" to 8" (6 to 203mm)	.50" to 12" (13 to 305mm)	12" (305mm)	3.9"/sec* (10cm/sec.)	14.4"(L) x 14.9"(W) x 10.4"(H) 36.6(L) x 37.8(W) x 27.7cm(H)	100/115V AC, 2.5A 60Hz (220-240V AC, 1.8A 50/60Hz	12.80 lbs (5.8 kg)
LDX8100	.25" to 8" (6 to 203mm)	.50" to 12" (13 to 305mm)	12" (305mm)	7.8"/sec* (19.8cm/sec.)	14.4"(L) x 14.9"(W) x 10.4"(H) 36.6(L) x 37.8(W) x 27.7cm(H)	100/115V AC, 2.5A 60Hz (220-240V AC, 2A 50Hz	12.80 lbs (5.8 kg)

*Feed Speed calculated at take-up hub origin. Feed Speed will increase as material dispenses. Speed calculated at 60Hz.

Specialty & Hand-Held

Additional info for LR4500 and LR4500W

- Accepts 1.25 and 3" (32mm and 76 mm) roll core sizes
- Operates on 12V DC with an included 100/120V AC adapter
- Made in the U.S.A. 



LR4500

Label Rewinder

- Rewinds labels from thermal transfer printers or reels
- 2 speeds (slow and fast)
- Bi-directional (forward and backward)
- Maximum material width 4.5" (114mm)
- Maximum outside diameter of roll 9" (251mm)



LR4500W

Wide Label Rewinder

- Rewinds labels from thermal transfer printers or reels
- 2 speeds (slow and fast)
- Bi-directional (forward and backward)
- Maximum material width 7.0" (178mm)
- Maximum outside diameter of roll 9" (251mm)
- Use 2 LR4500Ws to unwind and rewind labels for proper orientation of labels

MODEL #	Liner Capacity Width	Length	Roll Capacity	Feed Speed*	Core	Dimensions	Electrical Requirements	Weight
LR4500	.25" to 4.5" (6mm to 114mm)	Variable	9" (251mm)	Slow/Fast	1.25" & 3"	11" (L) x 6" (W) x 10.4" (H) 27.9cm (L) x 15.2cm (W) x 26.4cm (H)	12V DC with Universal transformer, 100V - 240V CE	8.5 lbs (3.6 kg)
LR4500W	.25" to 7" (6mm to 178mm)	Variable	9" (251mm)	Slow/Fast	1.25" & 3"	12.75" (L) x 6" (W) x 10.4" (H) 32.4cm (L) x 15.2cm (W) x 26.4cm (H)	12V DC with Universal transformer, 100V - 240V CE	8.7 lbs (3.9 kg)

Specialty & Hand-Held



LAP65-30

Manual Hand-Held Label Applicator

- Maximum label width 1.20" (30mm)
- Maximum label length 2.36" (60mm)
- Core size 1" (25mm)



LAP65-60

Manual Hand-Held Label Applicator

- Maximum label width 2.36" (60mm)
- Maximum label length 2.36" (60mm)
- Core size 1" (25mm)



LAP65-100

Manual Hand-Held Label Applicator

- Maximum label width 3.93" (100mm)
- Maximum label length 2.36" (60mm)
- Core size 1" (25mm)

Additional info for LAP65-30,

LAP65-60, LAP65-100

- Ideal for repetitive labeling of boxes or bags
- Simply squeeze handle to dispense and apply any die-cut label
- Maximum outside diameter of roll 3.93" (100mm)
- No custom tooled slots needed to dispense labels, just a 1/8" (3mm) gap between labels
- Manufactured for industrial use
- Unique sensor automatically adjusts the label stroke
- Patented mechanism dispenses virtually any shape of die-cut label

LDHANGTAB

Electric Hang-Tab Dispenser

- Automatically peels and advances labels
- Photosensor accuracy and reliability
- Anodized aluminum construction
- High-torque motor for heavy rolls of labels
- Will dispense hang-tabs from .25" to 4.75" (6 to 121mm) wide
- Will dispense hang-tabs from .50" to 6" (13 to 152mm) in length



Additional info for LDHANGTAB

- Will dispense labels and die-cut parts
- Adjustable strip plate for hard-to-release hang tabs
- Will accommodate core sizes from 1" to 6" (25 to 152mm), 3" core is included
- Automatically rewinds liner scrap for a cleaner working environment
- Liner scrap is easily removed
- No tools required for adjusting to different size hang-tabs
- No maintenance required
- Will dispense clear or opaque hang-tabs
- Made in the U.S.A. 🇺🇸

For 230V machines, please add "-2" to the end of the model number. (Example: LDHANGTAB-2)



Meets UL 60950-1 2nd Ed., CSA C22.2# 60950-1 2nd Ed and IEC 60950-1 2nd Ed Standards. Certified By Bureau Veritas / Curtis Straus (OSHA recognized NRTL Laboratory).

MODEL #	Max. Outside Dia. of Roll	Core Size	Liner Maximum Width	Liner Minimum Width	Maximum Label Length	Minimum Label Length	Weight
LAP65-30	3.93" (100mm)	1" (25mm)	1.20" (30mm)	.75" (19mm)	2.36" (60mm)	.78" (20mm)	11.2 oz (318 g)
LAP65-60	3.93" (100mm)	1" (25mm)	2.36" (60mm)	1" (25mm)	2.36" (60mm)	.78" (20mm)	13.1 oz (372 g)
LAP65-100	3.93" (100mm)	1" (25mm)	3.96" (100mm)	2.15" (55mm)	2.36" (60mm)	.78" (20mm)	15.0 oz (425 g)

MODEL #	Liner Capacity Width	Length	Roll Capacity	Feed Speed*	Dimensions	Electrical Requirements	Weight
LDHANGTAB	.25" to 4.75" (6mm to 121mm)	.50" to 6" (13mm to 152mm)	16" (408mm)	3.3"/sec* (8cm/sec)	10.8"(L) x 10.8"(W) x 14.5"(H) 27.4cm(L) x 27.4cm(W) x 36.8cm(H)	100/115 AC, 2.5A 60Hz (220-240V AC, 1.8A 50/60Hz CE)	9.5 lbs (4.3 kg)

*Feed Speed calculated at take-up hub origin. Feed Speed will increase as material dispenses. Speed calculated at 60Hz.

Bottle Labelers

Additional info for LAB01

- Heavy-duty metal construction
- No tools required for adjusting to different size labels
- No regular maintenance required
- Applies labels on bottles up to 6.5" in diameter



The LAB01 features START International's brand new, patent pending, cyli-SIZE™ technology. Easily label different sized cylindrical products, from .5" (12.70mm) to 6.5" (165mm) in one easy step. [ChapStick® size to 1 gallon]



LAB01

Manual Bottle Label Applicator

- Quickly applies labels to bottles, cans, jars, and other cylindrical products.
- Ideal for short runs
- Accurately places labels in same location for consistent look
- Easily adjustable for different sized cylindrical products from .5" (12.70mm) to 6.5" (165mm) in diameter [ChapStick® size to 1 gallon]
- Made in the U.S.A. 🇺🇸

LAB01-BW ACCESSORY

LAB01 Accessory for Light-Weight Bottles and Containers

- Applies appropriate pressure to light bottles & containers to ensure proper label application.
- Designed for use with the LAB01 Bottle Labeler
- **Accessory Only. LAB01 Bottle Label Applicator not included**



MODEL #	Bottle Size (Dia.)	Label Length	Label Width	Roll Capacity	Unit Dimensions	Weight
LAB01	.50" to 6.5" (12.70mm to 165mm)	.50" to 12" (12mm to 304mm)	1" to 6.5" (25mm to 165mm)	10" (25cm)	22.5" x 12" x 10.9" (572mm x 305mm x 277mm)	13.1 lbs (6kg)

If It's On A Liner, We Can Dispense It.

Dispense Virtually Any Size, Shape
or Material of Die-Cut Parts

Die-Cut Part

Additional info for DC6050

- Adjustable strip plate for hard-to-release die-cut parts
- Accommodates core sizes of 1" (25mm) and 3" (76mm), other sizes optional
- Capable of dispensing paper, polyester, vinyl, acetate, foil, foam, etc.
- Automatically rewinds liner scrap for a cleaner working environment
- Liner scrap is easily removed
- No tools required for adjusting to different size die-cut parts
- No maintenance required
- For Clear die-cuts please select Model # DC6050C
- 16" Long Reel Guide Available
- All 230V machines are CE Certified



DC6050

4.75" (121mm) Wide – Electric Die-Cut Part Dispenser "High Speed"

- Ideal for virtually any shape, size, and material die-cut part
- Automatically peels and advances die-cut parts
- Photosensor accuracy and reliability
- Anodized aluminum construction
- High-torque motor for large diameter die-cut rolls
- Will dispense die-cut parts from .25" to 4.75" (6 to 121mm) in width
- Will dispense die-cut parts from .50" to 6" (13 to 152mm) in length
- New built-in hanging capacity for use with workbenches and LDHANGER16
- Made in the U.S.A.

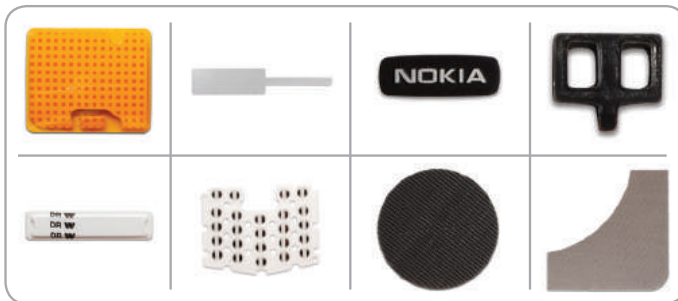


CLOSE-UP OF DIE CUT MATERIAL COMING OFF PLATE

For 230V machines, please add "-2" to the end of the model number. (Example: DC6050-2)



Meets UL 60950-1 2nd Ed., CSA C22.2# 60950-1 2nd Ed and IEC 60950-1 2nd Ed Standards. Certified By Bureau Veritas / Curtis Straus (OSHA recognized NRTL Laboratory).



Pablo D.

MODEL #	Liner Width	Length	Capacity	Roll Speed	Feed Dimensions	Electrical Requirements	Weight
DC6050	.25" to 4.75" (6 to 121mm)	.50 to 6" (13 to 152mm)	16" (408mm)	3.3"/sec* (8cm/sec)	10.8" (L) x 10.8" (W) x 14.5" (H) 27.4cm (L) x 27.4cm (W) x 36.8cm (H)	100/115V AC, 2.5A 60Hz, (220-240V AC, 1.8A 50/60Hz)	8.8 lbs (3.97 kg)

*Feed Speed calculated at take-up hub origin. Feed Speed will increase as material dispenses. Speed calculated at 60Hz.

QUICK REFERENCE CHART

ELECTRIC TAPE DISPENSERS

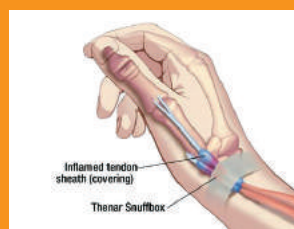
MODEL #	Tape Width	Cut Length	Memory	Diameter Of Roll	Machine Dimensions (L x W x H)	Tape Cutter	Weight	Page #
TDA025B	.12 - .98" (3 - 25mm)	.6 - 2.76" (15 - 70mm)	1	5.9" (150mm)	10.2 x 5 x 5.9 in (25.9 x 12.7 x 15cm)	Automatic	4.2 lbs (1.9kg)	11
TDA080	.25 - 3.15" (6 - 80mm)	1.6 - 394" (40 - 9999mm)	1	9" (228mm)	10.1 x 6.625 x 14.25 in (25.7 x 16.8 x 36.2cm)	Automatic	24 lbs (10.9kg)	8
TDA080-M	.25 - 3.15" (6 - 80mm)	1.6 - 394" (40 - 9999mm)	5	9" (228mm)	10.1 x 6.625 x 14.25 in (25.7 x 16.8 x 36.2cm)	Automatic	24 lbs (10.9kg)	9
TDA080-NS	.25 - 3.15" (6 - 80mm)	1.6 - 394" (40 - 9999mm)	1	9" (228mm)	10.1 x 6.625 x 14.25 in (25.7 x 16.8 x 36.2cm)	Automatic	24 lbs (10.9kg)	9
TDA080-NM	.25 - 3.15" (6 - 80mm)	1.6 - 394" (40 - 9999mm)	1	9" (228mm)	10.1 x 6.625 x 14.25 in (25.7 x 16.8 x 36.2cm)	Automatic	24 lbs (10.9kg)	9
TDA080-NM-NS	.25 - 3.15" (6 - 80mm)	1.6 - 394" (40 - 9999mm)	1	9" (228mm)	10.1 x 6.625 x 14.25 in (25.7 x 16.8 x 36.2cm)	Automatic	24 lbs (10.9kg)	9
TDA080-LR	.25 - 2" (6 - 50mm)	1.6 - 394" (40 - 9999mm)	1	5.5" (140mm)	17 x 6.625 x 14.5 in (43.2 x 16.8 x 36.8cm)	Automatic	30.2 lbs (13.7kg)	9
TDA080-LAM	.25 - 2" (6 - 50mm)	1.6 - 394" (40 - 9999mm)	1	6" (152mm)	17 x 6.625 x 16 in (43.2 x 16.8 x 40.6cm)	Automatic	30.2 lbs (13.7kg)	9
TDA150	.25 - 5.9" (6 - 150mm)	1.6 - 394" (40 - 9999mm)	1	9" (228mm)	10.25 x 13 x 14 in (26 x 33 x 35.6cm)	Automatic	37 lbs (16.8kg)	10
zcM0800	.25 - 1" (6 - 1mm)	1.18, 1.77 & 3.54" (30, 45 & 90mm)	0	5.3" (135mm)	6.97 x 3.78 x 4.53 in (177 x 96 x 115mm)	Manual	2.7 lbs (1.23kg)	12
zcM1000	.28 - 2" (7 - 51mm)	.79 - 39" (20 - 999mm)	1	7" (178mm)	9.7 x 5.3 x 6.3 in (24.5 x 13.5 x 16cm)	Automatic	5.6 lbs (2.54kg)	4
zcM1000B	.125 - 1" (3 - 25.5mm)	.79 - 39" (20 - 999mm)	1	7" (178mm)	9.7 x 5.3 x 6.3 in (24.5 x 13.5 x 16cm)	Automatic	5.6 lbs (2.54kg)	5
zcM1000C	.28 - 2" (7 - 51mm)	.79 - 39" (20 - 999mm)	1	7" (178mm)	9.7 x 5.3 x 6.3 in (24.5 x 13.5 x 16cm)	Automatic	5.6 lbs (2.54kg)	5
zcM1000D	.28 - 2" (7 - 51mm)	.2 - 39" (5 - 999mm)	1	7" (178mm)	9.7 x 5.3 x 6.3 in (24.5 x 13.5 x 16cm)	Automatic	5.6 lbs (2.54kg)	5
zcM1000E	.28 - 2" (7 - 51mm)	.79 - 39" (20 - 999mm)	1	7" (178mm)	9.7 x 5.3 x 6.3 in (24.5 x 13.5 x 16cm)	Automatic	5.6 lbs (2.54kg)	4
zcM1000F	.28 - 2" (7 - 51mm)	.79 - 39" (20 - 999mm)	1	7" (178mm)	9.7 x 5.3 x 6.3 in (24.5 x 13.5 x 16cm)	Automatic	5.6 lbs (2.54kg)	5
zcM1000K	.5 - 1.1" (12 - 28mm)	.79 - 39" (20 - 999mm)	1	7" (178mm)	10.2 x 5.3 x 6.5 in (25.9 x 13.5 x 16.5cm)	Automatic	5.6 lbs (2.54kg)	5
zcM1000T	.28 - 2" (7 - 51mm)	.79 - 39" (20 - 999mm)	1	7" (178mm)	9.7 x 5.3 x 6.3 in (24.5 x 13.5 x 16cm)	Automatic	5.6 lbs (2.54kg)	5
zcM100NM	.28 - 2" (7 - 51mm)	.79 - 39" (20 - 999mm)	1	7" (178mm)	9.7 x 5.3 x 6.3 in (24.5 x 13.5 x 16cm)	Automatic	5.6 lbs (2.54kg)	5
zcM1000NS	.28 - 2" (7 - 51mm)	.79 - 39" (20 - 999mm)	1	7" (178mm)	9.7 x 5.3 x 6.3 in (24.5 x 13.5 x 16cm)	Automatic	5.6 lbs (2.54kg)	5
zcM1100	.28 - 2" (7 - 51mm)	1.2 - 39" (30 - 999mm)	1	7" (178mm)	9.8 x 5.3 x 6.3 in (25 x 13.5 x 16.5cm)	Automatic	6.0 lbs (2.7kg)	6
zcM2000	.28 - 2" (7 - 51mm)	.79 - 39" (20 - 999mm)	3	7" (178mm)	9.7 x 5.3 x 6.3 in (24.5 x 13.5 x 16cm)	Automatic	5.6 lbs (2.54kg)	7
zcM2000X	.28 - 2" (7 - 51mm)	.79 - 39" (20 - 999mm)	10	7" (178mm)	9.7 x 5.4 x 5.9 in (245 x 135 x 150mm)	Automatic	5.8 lbs (2.54kg)	7
zcM2200	.28 - 2" (7 - 51mm)	1.18 - 39" (30 - 999mm)	3	7" (178mm)	9.8 x 5.3 x 6.5 in (25 x 13.5 x 16.5cm)	Automatic	6 lbs (2.7kg)	6

- zcM0800 can operate on either batteries or the optional AC adaptor.
- For complete product specifications, refer to the page number on far right column of the chart above.
- For 230V machines, please add "-2" to the end of the model number. (Example: zcM1000-2)

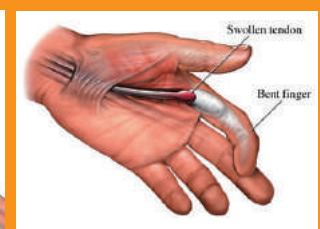
START Reducing Injuries

Using START's semi-automatic tape and label dispensers reduces exposure to conditions such as de Quervain's disease and Trigger Finger. Both of these conditions result in painful inflammation of tendons of the hands and fingers. Protect your employees and their health, and protect yourself from costly worker's compensation claims.

de Quervain's Disease



Trigger Finger



Two of the most common injury areas for end users

ELECTRIC LABEL DISPENSERS

MODEL #	Liner Width	Maximum Label Length	Roll Capacity	Feed Speed*	Weight	Page #
LD3000	.25 - 2.25" (6 - 57mm)	.25 - 3" (6 - 76mm)	7.5" (191mm)	2.2" (5.6cm) per sec.	2.8 lbs (1.27kg)	15
LD3000ESD	.25 - 2.25" (6 - 57mm)	.25 - 3" (6 - 76mm)	7.5" (191mm)	2.2" (5.6cm) per sec.	2.8 lbs (1.27kg)	15
LD3000FDA	.25 - 2.25" (6 - 57mm)	.25 - 3" (6 - 76mm)	7.5" (191mm)	2.2" (5.6cm) per sec.	2.8 lbs (1.27kg)	15
LD3500	.25 - 2.25" (6 - 57mm)	.25 - 4" (6 - 102mm)	7.5" (191mm)	2.2" (5.6cm) per sec.	2.8 lbs (1.27kg)	15
LD6025	.25 - 4.75" (6 - 121mm)	.125 - 6" (3 - 152mm)	12" (305mm)	1.6" (3.9cm) per sec.	7.0 lbs (3.18kg)	16
LD6050	.25 - 4.75" (6 - 121mm)	.50 - 6" (13 - 152mm)	12" (305mm)	3.3" (8cm) per sec.	8.8 lbs (3.97kg)	16
LD6100	.25 - 4.75" (6 - 121mm)	.125 - 6" (3 - 152mm)	12" (305mm)	6.6" (16.8cm) per sec.	8.8 lbs (3.97kg)	16
LDX6025	.25 - 7" (6 - 178mm)	.125 - 6" (3 - 152mm)	12" (305mm)	1.6" (3.9cm) per sec.	7.8 lbs (3.5kg)	17
LDX6050	.25 - 7" (6 - 178mm)	.50 - 6" (13 - 152mm)	12" (305mm)	3.3" (8cm) per sec.	9.6 lbs (4.4kg)	17
LDX6100	.25 - 7" (6 - 178mm)	.50 - 6" (13 - 152mm)	12" (305mm)	6.6" (16.8cm) per sec.	9.6 lbs (4.4kg)	17
LD8025	.25 - 5" (6 - 127mm)	.125 - 12" (3 - 305mm)	12" (305mm)	2" (5.1cm) per sec.	6.95 lbs (3.2kg)	18
LD8050	.25 - 5" (6 - 127mm)	.50 - 12" (13 - 305mm)	12" (305mm)	3.9" (10cm) per sec.	8.75 lbs (4.0kg)	18
LD8100	.25 - 5" (6 - 127mm)	.50 - 12" (13 - 305mm)	12" (305mm)	7.8" (19.8cm) per sec.	8.75 lbs (4.0kg)	18
LDX8025	.25 - 8" (6 - 203mm)	.125 - 12" (3 - 305mm)	12" (305mm)	2" (5.1cm) per sec.	7.75 lbs (3.5kg)	19
LDX8050	.25 - 8" (6 - 203mm)	.50 - 12" (13 - 305mm)	12" (305mm)	3.9" (10cm) per sec.	9.55 lbs (4.3kg)	19
LDX8100	.25 - 8" (6 - 203mm)	.50 - 12" (13 - 305mm)	12" (305mm)	7.8" (19.8cm) per sec.	9.55 lbs (4.3kg)	19
DC6050	.25 - 4.5" (6 - 114mm)	.50 - 6" (13 - 152mm)	16" (408mm)	3.3" (8cm) per sec.	11 lbs (4.95kg)	23
LDHANGTAB	.25 - 4.5" (6 - 114mm)	.50 - 6" (13 - 152mm)	16" (408mm)	3.3" (8cm) per sec.	9.5 lbs (4.3kg)	21

- For complete product specifications, refer to the page number on far right column of the chart above.
- For 220V machines, please add "-2" to the end of the model number. (Example: LD6050-2)

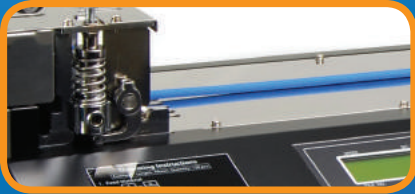
* Speed calculated at beginning diameter of take-up hub

NON-ADHESIVE CUTTERS

MODEL #	Maximum Width Cut	Maximum Cut Length	Max. Outside Thickness	Max. Diameter Of Roll	Feed Speed	Weight	Page #
zcM1500W	2" (51mm)	.79" - 39" (20mm - 999mm)	—	7" (178mm)	—	5.5 lbs (2.49kg)	29
zcM2500	2" (51mm)	1.2" - 39" (30mm - 999mm)	—	7" (178mm)	—	5.9 lbs (2.68kg)	29
TBC50	4.33" (110mm)	.04" - 394" (1mm - 9999mm)	.25" (6mm)	18" (457mm)	105 ft (32m) per min., 21" (53cm) per sec.	39 lbs (17.5kg)	27
TBC50H	3.54" (90mm)	.60" - 394" (15mm - 9999mm)	.25" (6mm)	18" (457mm)	105 ft (32m) per min., 21" (53cm) per sec.	47 lbs (21.3kg)	27
TBC50S	4.33" (110mm)	.04" - 394" (1mm - 9999mm)	.25" (6mm)	18" (457mm)	105 ft (32m) per min., 21" (53cm) per sec.	39 lbs (17.5kg)	27
TBC50SH	3.54" (90mm)	.60" - 394" (15mm - 9999mm)	.25" (6mm)	18" (457mm)	105 ft (32m) per min., 21" (53cm) per sec.	47 lbs (21.3kg)	27
TBC50HW	2.76" (70mm)	.60" - 328" (15mm - 100m)	.75" (19mm)	18" (457mm)	105 ft (32m) per min., 21" (53cm) per sec.	47 lbs (21.3kg)	28
TBC50HX	1.18" (30mm)	1.57" - 984" (40mm - 300m)	.25" (6mm)	18" (457mm)	105 ft (32m) per min., 21" (53cm) per sec.	59 lbs (26.5kg)	28
TBC55SK	4.33" (110mm)	1.18" - 5.9" (40mm - 150mm)	.25" (6mm)	18" (457mm)	105 ft (32m) per min., 21" (53cm) per sec.	43 lbs (19.5kg)	28
TBC552L	8.25" (210mm)	.04" - 984" (1mm - 300m)	.71" (18mm)	18" (457mm)	105 ft (32m) per min., 21" (53cm) per sec.	221 lbs (100kg)	29
TBC553L	12.20" (310mm)	.04" - 984" (1mm - 300m)	.71" (18mm)	18" (457mm)	105 ft (32m) per min., 21" (53cm) per sec.	228 lbs (103kg)	29
TBC554L	16.14" (410mm)	.04" - 984" (1mm - 300m)	.71" (18mm)	18" (457mm)	105 ft (32m) per min., 21" (53cm) per sec.	267 lbs (121kg)	29
TBC555L	20.08" (510mm)	.04" - 984" (1mm - 300m)	.71" (18mm)	18" (457mm)	105 ft (32m) per min., 21" (53cm) per sec.	324 lbs (147kg)	29

- For complete product specifications, refer to the page number on far right column of the chart above.
- For 220V machines, please add "-2" to the end of the model number. (Example:TBC50-2)

NON-ADHESIVE Cutters



VERSATILITY

- Heavy-duty and light-duty machines cut a wide variety of non-adhesive materials



EFFICIENCY

- High-speed operation can cut up to 140 pieces per minute on some machines



PRECISION

- Accurately cut each piece to a preprogrammed length

Proven Materials for Non-Adhesive Cutters



Cesar G. and Calvin K.



Look for the START® holographic seal to ensure product authenticity!



Automatic and User Friendly

NON-ADHESIVE
Cutters

Heavy-Duty



TBC50

COLD CUT

Heavy-Duty Non-Adhesive Material Cutter

- Automatically dispenses, measures and cuts non-adhesive materials
- Ideal for heavy production to cut tubing, sleeving, Nomex®, Velcro®, ribbon, etc.
- Cuts up to 4.3" (110 mm) wide material or multiple rolls
- High speed operation cuts up to 140 pieces per minute at 2" (50 mm) in length

TBC50H

HOT CUT

Heavy-Duty Non-Adhesive Material HOT Cutter

- Automatically dispenses, measures and cuts non-adhesive materials prone to fraying with a heat seal
- Ideal for heavy production to cut ribbon material, belting, webbing, sleeving, strapping, rope, etc.
- Cuts up to 3.54" (90mm) wide material or multiple rolls
- High speed operation cuts up to 140 pieces per minute at 2" (50mm) in length

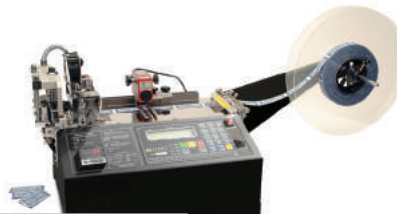


TBC50S

COLD CUT

Material Cutter with Photosensor Accuracy

- Cuts up to 4.33" (110mm) wide material or multiple rolls
- Cuts up to 140 pieces per minute at 2" (50mm) in length



TBC50SH

HOT CUT

Material Cutter with Photosensor and Hot Knife

- Cuts up to 3.54" (90mm) wide material or multiple rolls
- Cuts up to 140 pieces per minute at 2" (50mm) in length

Additional info for TBC50

- Easily programmed and operated - set length, quantity, and feed speed; then, press start
- Automatic shut-off feature stops power if material runs out during operation
- Adjustable pressure on feed roller for thin or smooth materials
- Stepper motor ensures accuracy
- HSS (high speed steel) cutting blade
- Safety guard protects operator from cutting mechanism
- No tooling required to cut different materials
- All 230V machines are CE Certified

Additional info for TBC50H

- Adjustable temperature control
- Easily programmed and operated - set length, quantity, and feed speed; then press start
- Automatic shut-off feature stops power if material runs out during operation
- Adjustable pressure on feed roller for thin or smooth materials
- Stepper motor ensures accuracy
- HSS (high speed steel) cutting blade
- Safety guard protects operator from cutting mechanism
- No tooling required to cut different materials
- All 230V machines are CE Certified

For 230V machines, please add "-2" to the end of the model number. (Example: TBC50-2)

MODEL #	Max. Width	Cut Length	Max. Material Thickness*	Feed Speed	Accuracy*	Max. Outside Dia. of Roll	Length and Count Settings	Feed and Cut	Dimensions	Weight
TBC50	4.33" (110mm)	.04 to 984' (1 to 300m)	0.25" (6mm)	105' (32m) / min. 21" (53cm) / sec.	±0.04" (1mm)	18" (457mm)	digital	automatic	38" (L) x 12.6" (W) x 18.9" (H) 965mm(L) x 320mm(W) x 380mm(H)	39 lbs (17.5 kg)
TBC50H	3.54" (90mm)	.60 to 984' (15 to 300m)	0.25" (6mm)	105' (32m) / min. 21" (53cm) / sec.	±0.04" (1mm)	18" (457mm)	digital	automatic	35.5" (L) x 14.6" (W) x 16" (H) 902mm(L) x 370mm(W) x 406mm(H)	47 lbs (21.3 kg)
TBC50S	4.33" (110mm)	.04" to 984' (1mm to 300m)	0.25" (6mm)	105' (32m) / min. 21" (53cm) / sec.	±0.04" (1mm)	18" (457mm)	digital	automatic	38" (L) x 12.6" (W) x 16" (H) 965mm(L) x 320mm(W) x 406mm(H)	39 lbs (17.5 kg)
TBC50SH	3.54" (90mm)	.60" to 984' (15mm to 300m)	0.25" (6mm)	105' (32m) / min. 21" (53cm) / sec.	±0.04" (1mm)	18" (457mm)	digital	automatic	32.3" (L) x 14.6" (W) x 16" (H) 820mm(L) x 370mm(W) x 406mm(H)	47 lbs (21.3 kg)

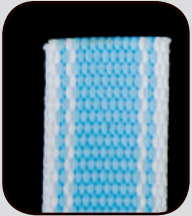
Electrical requirements: TBC50/TBC50H: 110V 50/60Hz (230V 50/60Hz CE), TBCFEEDER: 115 or 230V 50/60Hz CE, <2amps Switchable *Dependent on material being cut

NON-ADHESIVE Cutters

Heavy-Duty

Additional info for Heavy-Duty cutters

- Automatic shut-off feature stops power if material runs out during operation
- Easily programmed and operated - set length, quantity, and feed speed, then press start
- Adjustable pressure on feed roller for thin or smooth materials
- Stepper motor ensures accuracy
- HSS (high speed steel) cutting blade
- Safety guard protects operator from cutting mechanism
- No tooling required to cut different materials
- All 230V machines are CE Certified



HOT CUT

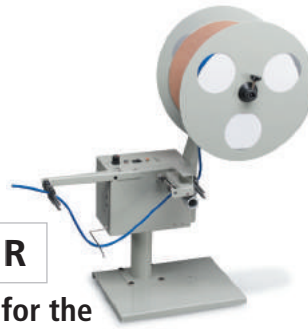
Hot Cut machines are ideal for materials that fray when cut

Suggested accessory:
TBCFEEDER

See Accessories page 27



For 230V machines, please add "-2" to the end of the model number. (Example: TBC50-5H-2)



TBCFEEDER

Material Feeder for the TBC50 Series Non-Adhesive Cutters

- For use with the TBC50 cutter series to reduce drag and slippage of material while advancing it
- All electric, high-speed and auto-adjusting for slack in material
- Feeds materials up to 4.33" (110mm) wide



TFD250

Large Heavy-Duty Material Feeder for TBC50 Series Non-Adhesive Cutters

- For use with the TBC50 cutter series to reduce drag and slippage of material while advancing it
- All electric, high-speed and auto-adjusting for slack in material
- Feeds materials up to 9.8" (250mm) wide



TBC127VF

Large Material Feeder for TBC50 Series Non-Adhesive Cutters

- For use with the TBC50 cutter series to reduce drag and slippage of material while advancing it
- All electric, high-speed and auto-adjusting for slack in material
- Feeds materials up to 5" (127mm) wide



TBC50HX

HOT CUT

Material ANGLED Cutter with HOT Knife

- Cuts up to 1.18" (30mm) cross cut or 1.77" (45mm) straight cut
- Cuts up to 140 pieces per minute at 2" (50mm) in length



TBC50HW

HOT CUT

Material Cutter with a Hot Wire

- Cuts expandable braided sleeving up to 0.75" diameter
- Cuts up to 25 pieces per minute at 4" (100mm) in length



TBC55SK

COLD CUT

Label Cutter with Stacker

- Cuts up to 3.54" (90mm) wide material or multiple rolls
- Cuts up to 140 pieces per minute at 2" (50mm) in length

MODEL #	Max. Width	Cut Length	Max. Material Thickness*	Feed Speed	Accuracy*	Max. Outside Dia. of Roll	Length and Count Settings	Feed and Cut	Dimensions	Weight
TBCFEEDER	4.33" (110mm)	N/A	N/A	adjustable	N/A	18" (457mm)	N/A	N/A	30" (L) x 13.4" (W) x 8.7" (H) 740mm(L) x 340mm(W) x 220mm(H)	16 lbs (7.3 kg)
TFD250	9.8" (250mm)	N/A	N/A	adjustable	N/A	39" (990mm)	N/A	N/A	38.2" (L) x 19.3" (W) x 29.1" (H) 970mm(L) x 490mm(W) x 740mm(H)	65 lbs (29.5kg)
TBC127VF	5" (127mm)	N/A	N/A	adjustable	N/A	18" (457mm)	N/A	N/A	18.9" (L) x 15" (W) x 16.9" (H) 480mm(L) x 380mm(W) x 430mm(H)	45 lbs (20.3 kg)
TBC50HX	1.18" (30mm)	1.57" to 984' (40mm to 300m)	0.25" (6mm)	105' (32m) / min. 21" (53cm) / sec.	±0.04" (1mm)	18" (457mm)	digital	automatic	35.4" (L) x 15" (W) x 16.9" (H) 900mm(L) x 380mm(W) x 430mm(H)	59 lbs (26.5 kg)
TBC50HW	2.76" (70mm)	.60" to 328' (15mm to 100m)	0.75" (19mm)	105' (32m) / min. 21" (53cm) / sec.	±0.04" (1mm)	18" (457mm)	digital	automatic	32.3" (L) x 14.6" (W) x 15" (H) 820mm(L) x 370mm(W) x 380mm(H)	47 lbs (21.3 kg)
TBC55SK	3.54" (90mm)	1.18" to 5.9" (40mm to 150mm)	0.25" (6mm)	105' (32m) / min. 21" (53cm) / sec.	±0.04" (1mm)	18" (457mm)	digital	automatic	41" (L) x 12.6" (W) x 16" (H) 1040mm(L) x 320mm(W) x 406mm(H)	43 lbs (19.5 kg)

Electrical requirements: 110V 50/60Hz (230V 50/60Hz CE), <2amps Switchable *Dependent on material being cut

NON-ADHESIVE Cutters



TBC552L **COLD CUT**

Extra Large Cutter

- Cuts up to 8.25" (210mm) wide material or multiple rolls
- Cut up to 105 ft (32m) per min., 21" (43cm) per sec



TBC553L **COLD CUT**

Extra Large Cutter

- Cuts up to 12.20" (310mm) wide material or multiple rolls
- Cut up to 105 ft (32m) per min., 21" (43cm) per sec

» For larger widths, refer to TBC554L & TBC555L on chart below.

zcM1500W

Electric Light-Duty Non-Adhesive Cutter

- Ideal for low production of repetitive cutting of non-adhesive materials such as heat-shrink tubing
- Program a defined length and automatically advance and cut material
- Accepts widths up to 2" (51mm)
- Cuts material lengths from .79" to 39" (20 to 999mm)



zcM2500

Electric Light-Duty Non-Adhesive Cutter with Safety Guard Cutter

- Ideal for low production of repetitive cutting of non-adhesive materials such as heat-shrink tubing
- Safety guard system prevents activation of cutter when foreign objects are present (fingers, tools, etc.)
- Accepts widths up to 2" (51mm)
- Cuts material lengths from 1.2" to 39" (30 to 999mm)



Additional info for

zcM1500W & zcM2500

- Photocell-actuated feed & cut or push-button feed & cut
- Guillotined cut for a straight edge
- LED Digital length adjustment
- Manual override of preset lengths
- Blades good for up to 200,000 cuts (dependent on type of material)
- Steel frame for durability
- Cabinet made from flame-retardant antistatic composite (auto ignition of 896° F/ 480°C)
- Comes with a 3-in-1 core (1" (25mm), 1.4" (35mm), 3" (76mm))
- Accuracy of cut length is +/- .04" (1mm) (dependent on type of material)
- Many available accessories fit this machine. See Accessories section.
- All 230V machines are CE Certified

For 230V machines, please add "-2" to the end of the model number. (Example: zcM1500W-2)

MODEL #	Max. Width	Max. Material Cut Length	Max. Material Thickness*	Feed Speed	Accuracy*	Max. Outside Dia. of Roll	Length and Count Settings	Feed and Cut	Dimensions	Weight
TBC552L	8.25" (210mm)	.04" to 984' (1mm to 300m)	0.71" (18mm)	105' (32m) / min. 21" (53cm) / sec.	±0.04" (1mm)	18" (457mm)	digital	automatic	31"(L) x 22"(W) x 44"(H) 790mm(L) x 550mm(W) x 1115mm(H)	221 lbs (100 kgs)
TBC553L	12.20" (310mm)	.04" to 984' (1mm to 300m)	0.71" (18mm)	105' (32m) / min. 21" (53cm) / sec.	±0.04" (1mm)	18" (457mm)	digital	automatic	31"(L) x 22"(W) x 44"(H) 790mm(L) x 550mm(W) x 1115mm(H)	228 lbs (103 kgs)
TBC554L	16.14" (410mm)	.04" to 984' (1mm to 300m)	0.71" (18mm)	105' (32m) / min. 21" (53cm) / sec.	±0.04" (1mm)	18" (457mm)	digital	automatic	42"(L) x 31"(W) x 52"(H) 1050mm(L) x 770mm(W) x 1320mm(H)	267 lbs (121 kgs)
TBC555L	20.08" (510mm)	.04" to 984' (1mm to 300m)	0.71" (18mm)	105' (32m) / min. 21" (53cm) / sec.	±0.04" (1mm)	18" (457mm)	digital	automatic	46"(L) x 31"(W) x 52"(H) 1150mm(L) x 770mm(W) x 1320mm(H)	324 lbs (147 kgs)

Electrical requirements: 110V 50/60Hz (230V 50/60Hz CE), <2amps Switchable *Dependent on material being cut

MODEL #	Max. Width Cut*	Length Cut	Max. Outside Dia. of Roll	3-in-1 Core Holder	Display	Accuracy of Cut	Cutter	Safety Guard	Auto Feed	Weight	Dimensions
zcM1500W	up to 2" (51mm)	.79" to 39" (20 to 999mm)	7" (178mm)	1", 1.4", 3" (25, 35, 76mm)	3 digit (LED)	±0.04" (1mm)	automatic	N/A	yes	5.5 lbs (2.49 kg)	5.4"(L) x 9.8"(W) x 6.2"(H) 137mm(L) x 249mm(W) x 159mm(H)
zcM2500	up to 2" (51mm)	1.2" to 39" (30 to 999mm)	7" (178mm)	1", 1.4", 3" (25, 35, 76mm)	3 digit (LED)	±0.04" (1mm)	automatic	yes	yes	5.9 lbs (2.68 kg)	5.4"(L) x 9.7"(W) x 6.2"(H) 137mm(L) x 245mm(W) x 150mm(H)

Electrical requirements: 117V 50/60Hz, <1 amp (230V 50/60Hz CE)

*dependent on the thickness and hardness of the material to be cut

Let START test your material on our machines to ensure compatibility

Not Finding What You're Looking For?

CALL US
to inquire about your specific material dispensing needs.
(972) 248-1999

VISIT US ONLINE
to get a quote or see detailed information about our machines.
STARTinternational.com

FOOTSWITCH

Foot Switch

- Allows operator to advance material without pressing the button on the dispenser
- For the TDA080 series, order Part # TDA080PFS
- For the zcM1000 and zcM2000 series, order Part # ZFOOTSWITCH



zcM1000PCR

Creaser

- Creaser for tapes that have a tendency to curl or are flimsy, such as Kapton® tape
- Designed for the zcM1000 series, zcM1100, zcM2000 series, and the zcM2200
- Creaser will not crease tape narrower than .5" (13mm) in width



CORE HOLDERS

Tape Core Holder

- Individual core holder for use with smaller inside diameter cores
- Designed for the zcM1000, zcM1100, zcM2000, and zcM2200 series, please reference zcM1000P109 (1.25") & zcM1000P110 (1.50"). For TDA080 Core Holders, please reference TDA080P601-1 (1") and TDA080P601-2 (1.5").



zcM1000P550E

Dual Cutting Head with Reel

- Dual Sensor Cutting Head (2 photosensors)
- Allows for the dispensing of two (2) rolls of tape
- Feeds and cuts when both pieces of tape are removed



zcM1000P025

Liner Remover

- Removes bottom liner from double-coated or metal tapes
- 1" (25mm) maximum width
- Designed for the zcM1000 series, zcM1100, zcM2000 series, and the zcM2200



zcM1000P026

Reel Stand

- Allows for larger diameter rolls to be dispensed
- Up to 9.45" (240mm) in diameter
- Designed for the zcM1000 series, zcM1100, zcM2000 series, and the zcM2200



TDSTAND03 TDSTAND08

3" & 8" Wide External Reel Stand

- 3" and 8" (76mm and 203mm) maximum width
- Up to 20" (508mm) diameter rolls
- Allows for larger diameter rolls of tape or labels to be dispensed
- Use for labels, tape, and non-adhesive materials



TDSTAND03



TDSTAND08

LD-SENSOR EXT KIT

Photo Sensor Bracket Extension

- Extended bracket allows the positioning of the photo sensor at a right angle (90 degrees) to detect and dispense challenging materials
- Can be used on the standard LD6000 and LDX6000 series of dispensers to detect clear and reflective materials



LD-COUNTER

Electric Label Dispenser Counter

- Counts the number of labels dispensed
- Available for the LD6000, LDX6000, LD8000 and LDX8000 Series
- Cannot be sold separately from dispenser



LDPBATTERY LDPBATTERY-CH

Rechargeable External Battery Pack & Charger

- For use with the LD3000, LR4500 and the LD4500W
- Allows for portable use of the LD3000, LR4500 and the LR4500W
- 12V 7.2AH rechargeable battery
- Charge life: 2-3 shifts; Battery life: 3-5 years
- **Charger sold separately:** Part # LDPBATTERY-CH



LDHANGER16

Stand for Label Dispenser

- Allows operator to hang LD3000, LD3500, LD6000 and LDX6000 series
- Aluminum construction
- Dimensions: 18"H x 16"W
- Weight: 5 lbs



ACCESSORIES

TAPE ACCESSORIES

To see a list of tape accessories please visit STARTinternational.com/en/products/Accessories

LABEL ACCESSORIES

To see a list of label accessories please visit STARTinternational.com/en/products/Label-Accessories

PARTS

For Parts Lists of our products visit STARTinternational.com/en/support-center/product-care

For
Faster Service
Please fill out
COMPLETELY!

Material Evaluation Form

*** Return a copy of this form along with your sample material - minimum 15 feet (4.5m) ***

Why fill this form out? START International will test your material for free and recommend the product that best fits your application. "We don't just sell machines... we offer solutions."

START® Int. Employee Assisting with Evaluation: _____
Name: _____ Company: _____
Address: _____ City: _____ State: _____ Zip: _____ Country: _____
Tel: _____ Fax: _____ Email: _____

Preferred Type of Equipment: (check all that apply)

If you would like us to do testing on a specific machine, fill in here: _____

1 **MACHINE**

Electric Tape Dispenser Electric Label Dispenser Non-Adhesive Cutter
 Specialty Application Bottle Labeler Other: _____

Please Describe the Following: (if applicable)

2 **APPLICATION**

Required Cut Length(s) and Tolerance(s): _____
(Tape Dispenser and Non-Adhesive Cutter Only)

Process being performed: _____

Current process time: _____ Desired process time: _____

3 **MATERIAL**

Type of Tape (material, width, brand): _____

Type of Label / Die-Cut Part (material, size, brand): _____

Is the material spooled or loose ? For spooled, what is the weight of the spool including material? _____
(Non-Adhesive Cutter Only)

Diameter of Bundle (TDWW only): _____

4 **USAGE**

Number of Pieces used Per Shift: _____ Per Day: _____

Type of Environment used in: _____

Please include other important application information: _____

Please **COPY** this form and mail along with your sample material to:

Attn. Technical Service
START International
4270 Airborn Drive
Addison, TX 75001
U.S.A.

**PLEASE BE SURE TO SEND A
MINIMUM OF 15 FEET (4.5M)
OF THE
EXACT MATERIAL BEING USED
IN PRODUCTION**



Productivity in your backyard and at your fingertips.



General Information

CORPORATE HEADQUARTERS:

START International

4270 Airborn Drive
Addison, TX 75001, U.S.A.

Telephone +1.972.248.1999

Email info@startinternational.com
service@startinternational.com
ventas@startinternational.com

Website www.STARTinternational.com

Office hours:

8am-5pm CST (Central Standard Time)
Monday - Friday



Randa H.

SHIPPING WITHIN NORTH AMERICA

Unless instructed otherwise, orders are shipped UPS® or FedEx® ground. We prepay and add shipping charges to your order or we can ship freight collect. Shipments are F.O.B. shipping point.

SHIPPING INTERNATIONAL

Unless specified on P.O., all orders are shipped FedEx® or UPS®, as per customer request. We prepay and add shipping charges to your order.

INTERNATIONAL CUSTOMERS

START International welcomes its global customers. Payment methods include a wire transfer or credit card. Please contact us by telephone or email for more information.

TECHNICAL ASSISTANCE

We are happy to help you in choosing the correct machine to fit your needs. It is strongly recommended that all materials (tape, labels, die-cut parts, tubing, etc.) be tested by START prior to purchase. We will test any material sent to our office for proper function and warrant the machine for the specific use intended.

Please make a copy of the Material Evaluation Form on the previous page. Complete the form and send it in with your material to be tested. We will provide you with a written copy of the test results of your material and recommend a product to fit your needs. Photos and videos of evaluation will be provided on request.

RETURNS AND EXCHANGES

We guarantee that our products will perform to the published specifications. Please contact customer service for a Return Materials Authorization (RMA) within 15 days of receipt of machine if a return or exchange is required. Packages arriving without prior authorization may be refused.

All returns must be shipped prepaid, in manufacturer's original packaging, in "as-new" condition and are subject to inspection for damage or misuse prior to issuance of credit. We do not accept returns on special orders. Restocking fees may apply. Goods must be received by START within 7 days of issuing the RMA.

WARRANTIES

START International warrants all products against defects in design, materials and workmanship.

Materials used in some product photos throughout this catalog are for example only and do not suggest endorsement of the products represented. Trademarks and/or registered trademarks are the property of those represented. START International® logo and TheTapeDispenser® and TheLabelDispenser® and TheDieCutPartDispenser® and Labelmoto® and cYli-SIZE™ are trademarks and/or registered trademarks of Start Manufacturing, Inc dba START® International.

TAPE DISPENSERS Heat Shrink Tubing
 Parts Assembly **PACKAGING** **LABEL DISPENSERS**
 Product ID General Coil Winding RFID VHB Application
NON-ADHESIVE CUTTERS Safety Seal **AUTOMOTIVE**
 Barcodes pharmaceutical **Battery Manufacturing**
 Nutritional Info Labels **APPLIANCE** Die-Cut Gaskets
MANUFACTURING **SOLAR & WIND POWER**
ELECTRONICS **MEDICAL** **APPLIANCE** **FOOD & BEVERAGE**
 Wire Harnessing Promotional Labels



START International
 4270 Airborn Drive, Addison, TX 75001, U.S.A.
 Tel 1.972.248.1999 • service@STARTinternational.com
www.STARTinternational.com