



We Are Dispensers

Tape Dispensers

Wire Harnessing

VHB Application

APPLIANCE

PACKAGING

Non-Adhesive Cutters

Product ID

SOLAR & WIND POWER

Battery Manufacturing

Parts Assembly

FOOD & BEVERAGE

RFID

Label Dispensers

Barcodes

Promotional Labels

pharmaceutical

Safety Seal

AUTOMOTIVE

ELECTRONICS

Heat Shrink Tubing

TDA150 Series



START International

4270 Airborn Drive, Addison, TX 75001, U.S.A.

Tel 1.972.248.1999 • Fax 1.972.248.1991 • service@STARTinternational.com

www.STARTinternational.com





CONTENTS

Read this user’s manual before use to ensure proper operation. Keep the manual on hand for reference in case there is a problem.

Warranty Information	Page 2
Features	Page 3
Notes	Page 3
Setup Operations	Page 4
Specifications	Page 4
Quick Start Guide	Page 5
Trouble Shooting	Page 6
Preventive Maintenance	Page 6
Exploded Views	Page 7 - 11
Parts List	Page 12 - 18

WARRANTY POLICY FOR LD SERIES LABEL DISPENSERS

START International warrants all parts on TDA080 series tape dispensers against defects in design, materials and workmanship for a period of 360 days. Parts excluded from this are: cutting blades, silicone rollers and cutter liners; these parts are considered “wear parts”. Labor to replace defective parts will be performed at no charge for the first 180 days after date of purchase. Warranty does not cover transportation costs.

START International’s sole obligation under this warranty is limited to repair, replacement or credit of the purchase price, at our option, which do not properly perform the function for which they were designed.

Warranty repair is contingent upon START’s examination and determination that alleged defects have not been caused by misuse, abuse, improper installation or application, repair, alteration, accident or neglect in use, storage, transportation or handling.

The above warranty and remedy constitutes START International’s sole liability hereunder and are in lieu and exclusive of all other warranties and remedies expressed, implied, or statutory, including, but not limited to, those of merchantability and fitness for a particular purpose.

REPAIR POLICY

Contact START INTERNATIONAL to determine nature of problem.

Furnish START with the following information:

1. Who the unit was purchased from.
2. Model number and serial number.
3. Date purchased (copy of invoice or packing slip required).

START will issue an RMA (Return Material Authorization) for the repair. Return machine to START by freight, insured and prepaid. START will notify the customer if there is a repair charge. A \$25.00 evaluation charge will apply to all non-warranty repairs, which will be applied to repair change.

For the full Warranty & Repair policy please visit www.STARTInternational.com



FEATURES

- When using automatic feed, remove the first piece of tape, the unit will automatically feed and cut the next piece at the preset length.
- Feed length can be easily set using thumbwheel controls.
- Hold down shaft increases accuracy by maximizing tape adhesion to the feed rollers.
- The blade is easy to remove and replace.
- Optional serrated blades for hard to cut materials.

NOTES

- Do not leave tape dispenser in direct sunlight.
- Wipe with dry cloth only.
- Do not drop the dispenser or subject it to heavy shock.
- Turn off machine when not in use.



- Tape Length Display – Shows preset feed length. Four-digit display can be set from 50-9999mm.
- Interval Knob – Sets delay time before dispensing next piece.
- Auto/Manual Switch – Toggles operating mode between Manual (press Tape Advance button to dispense) and Auto (automatic feed and cut when piece is removed)
- Power Switch – Press to turn power On and Off.
- Tape Advance Button – Press to feed and cut one piece of tape to the preset length.
- Hold Down Shaft – Increases adhesion to feed roller.
- Reel Holder – 3” core to hold material.
- Alarm – Lights when there is a malfunction in the unit.



SET-UP

1. With Power Switch off, plug power cord into dispenser and then into wall outlet.
2. Make sure machine is grounded properly.
3. Set the Tape Length Display to 200mm.
4. Set the Auto/Manual Switch to Manual.
5. Turn dispenser Power Switch on, switch will be illuminated.
6. Place tape roll on Reel Holder.
7. Put Reel Holder into reel holder slots.
8. Open latched top cover and remove metal Hold Down Shaft.
9. Press end of tape firmly onto metal feed roller, then replace Hold Down Shaft over tape and close top cover.
10. Press Tape Advance Button.
11. Remove tape then press Tape Advance Button again to ensure proper feeding.

OPERATION

- After tape has been loaded and fed, turn Power Switch off.
- Set Tape Length Display to required length using the push buttons above and below the numerical display. **** The length shown is in millimeters.****
- Push button Auto/Manual Switch to desired location.
 AUTO: When the cut piece of tape is removed from the machine, the next piece is automatically fed and cut. The Interval Knob will set the time delay before the next piece is dispensed. Maximum delay is 25 seconds.
 MANUAL: The Tape Advance Button must be pressed each time a piece of tape is needed. The tape will then be fed and cut.
- Turn Power Switch on.
- Press Tape Advance Button to begin dispensing tape.

SPECIFICATIONS

Model #	Tape Width	Cut length	Max. Outside Dia. P	Core Diameter**	Accuracy of Cut*	Tape Cutter	Feed Type	Length Setting	Weight	Dimensions
TDA150	.25 to 5.9" (6 to 150mm)	2 to 394" (50 to 9999mm)	7" (251mm)	3" (76.2mm)	+/- .04" (1mm)	Automatic	Automatic	Digital	38lbs. (17kg)	10"(L) x 13"(W) x 13"(H) / 25cm(L) x 33cm(W) x 33cm(H)

- Auxiliary stand available for diameters up to 24".
- * Dependant on material.
- ** Other sizes available.

QUICK START GUIDE

1

Power Off

A

A: Ensure power button is set to off

3

Open Top Panel

A

A: Open top door panel
B: Remove hold down shaft guide from unit.

2

Load Tape

A

A: Slide tape roll onto core holder
B: Place loaded core on holding bracket

4

Affix Tape to Feed Roller

A

A: Affix tape onto feed roller
B: Re-insert hold down shaft into guide.

5

Plug In - Turn On

A

A: Connect power cord (in back)
B: Press power switch (on front) to turn on the machine

7

Select Mode

A

A: Choose desired operation mode:

- FEED
- MANUAL (feed & cut)
- AUTO (feed & cut)
- INTERVAL (feed & cut)

6

Feed Tape

A

A: Close top panel door
B: Press advance button to feed tape

8

A

A: Set desired tape length by pushing cm or mm buttons.



TROUBLESHOOTING

When problems occur, carry out the following procedures. If the tape dispenser does not operate normally after following the troubleshooting procedures, contact your supplier or Start International.

No power light / Tape does not feed

- Unplug unit and plug in again.
- Turn power switch off, wait 5 seconds, turn unit back on.
- Check that front panel is closed securely, and safety interlock is engaged.
- Verify that the fuse has not blown.
- Check that Tape Length Display is 40mm or greater.

Tape does not feed when unit is in AUTO mode

- Check that Auto/Manual Switch is in correct position.
- Turn Interval Knob all the way counterclockwise.
- Wait 1 full second after tape is cut before removing tape from machine.

Blade sticks in closed position

- Apply silicon oil to #242 Blade Roller.

Tape is not cut all the way through

- Replace #279 blade with #279S serrated blade.

PREVENTIVE MAINTENANCE

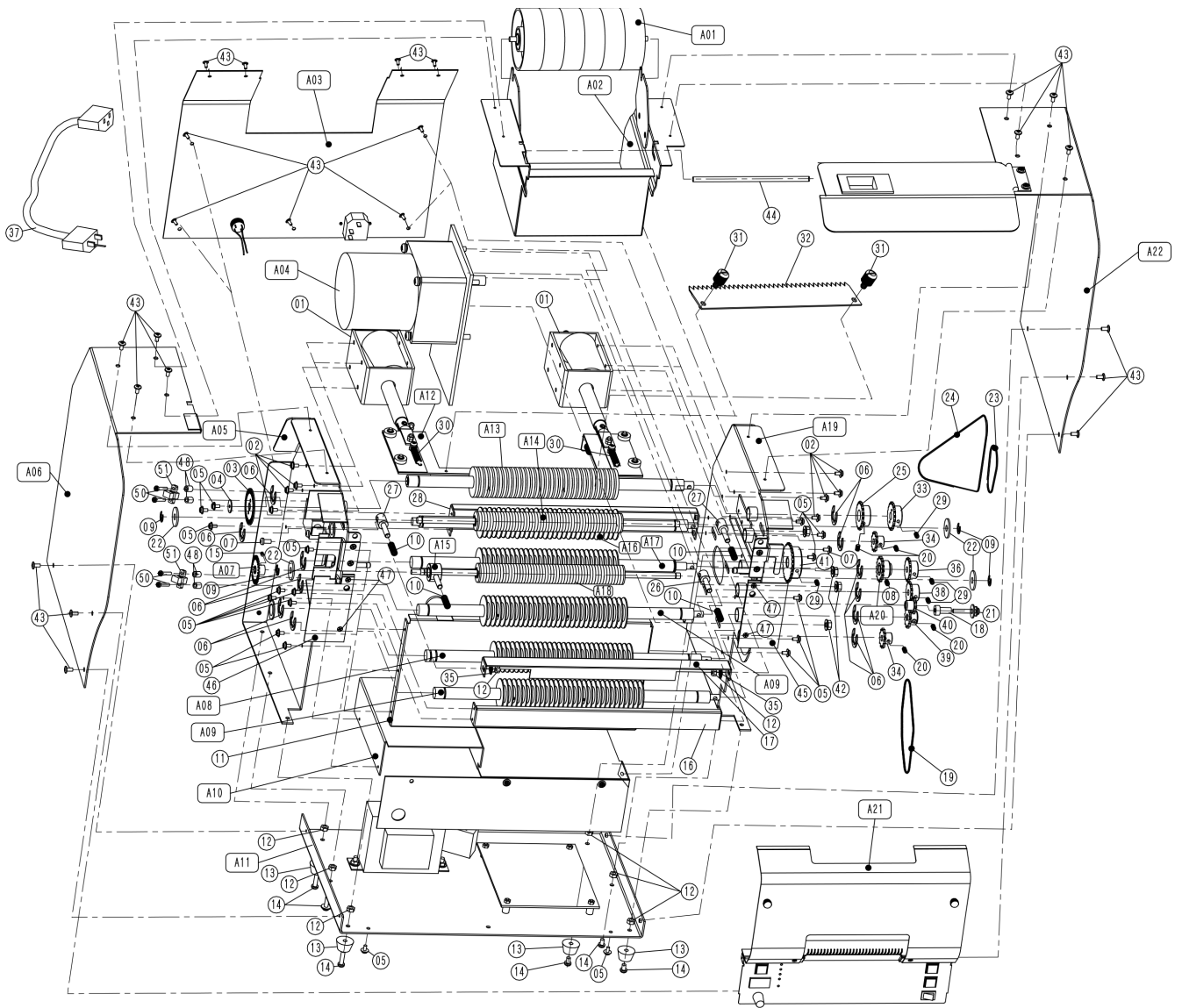
WEEKLY – Wipe feed rollers and blade with proper solvent to remove adhesive build-up.

MONTHLY – Apply silicon oil (available from Start International) to #242 blade roller. Inspect pressure rollers and cutting blade for wear.

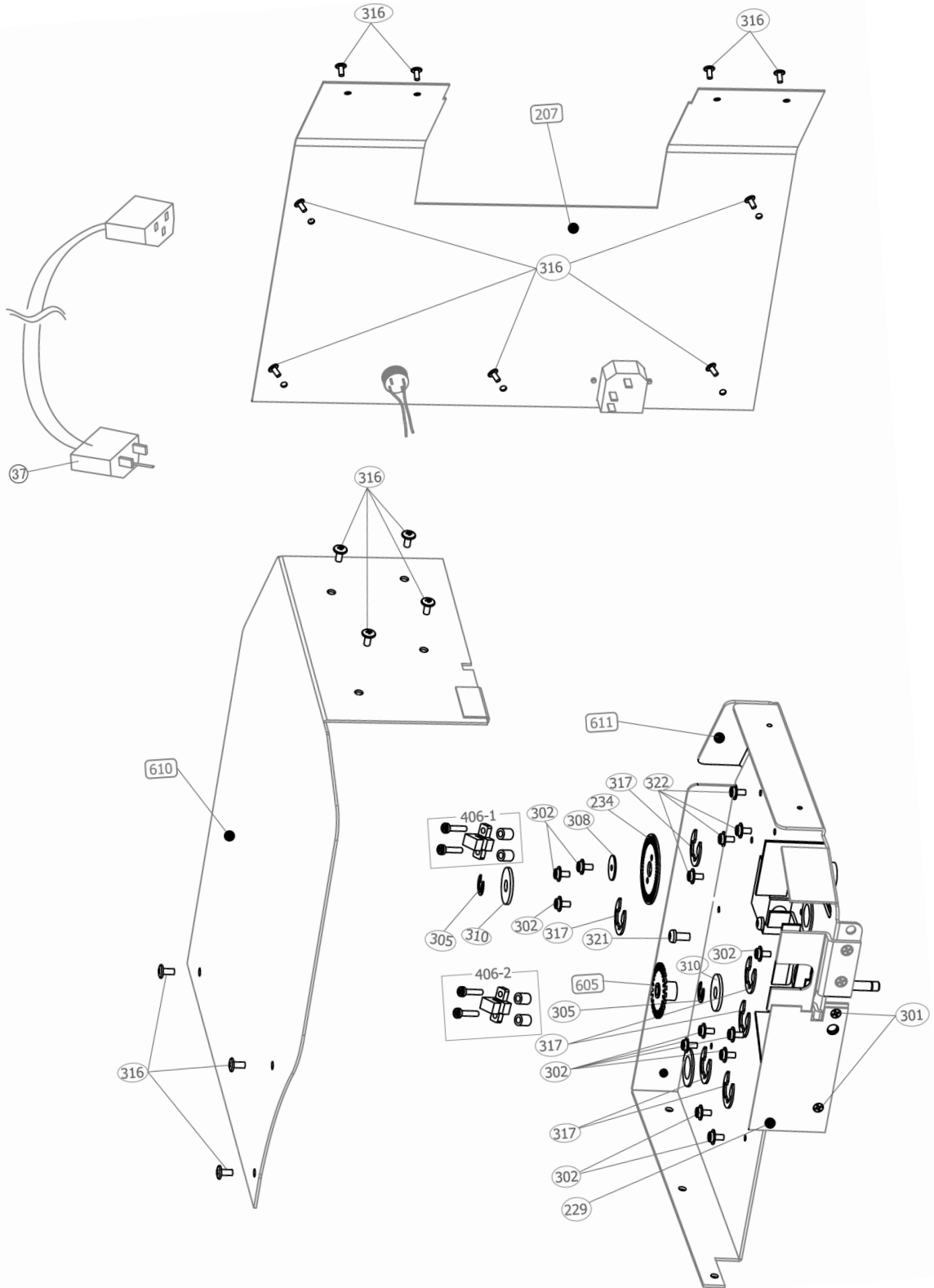


We Are Dispensers

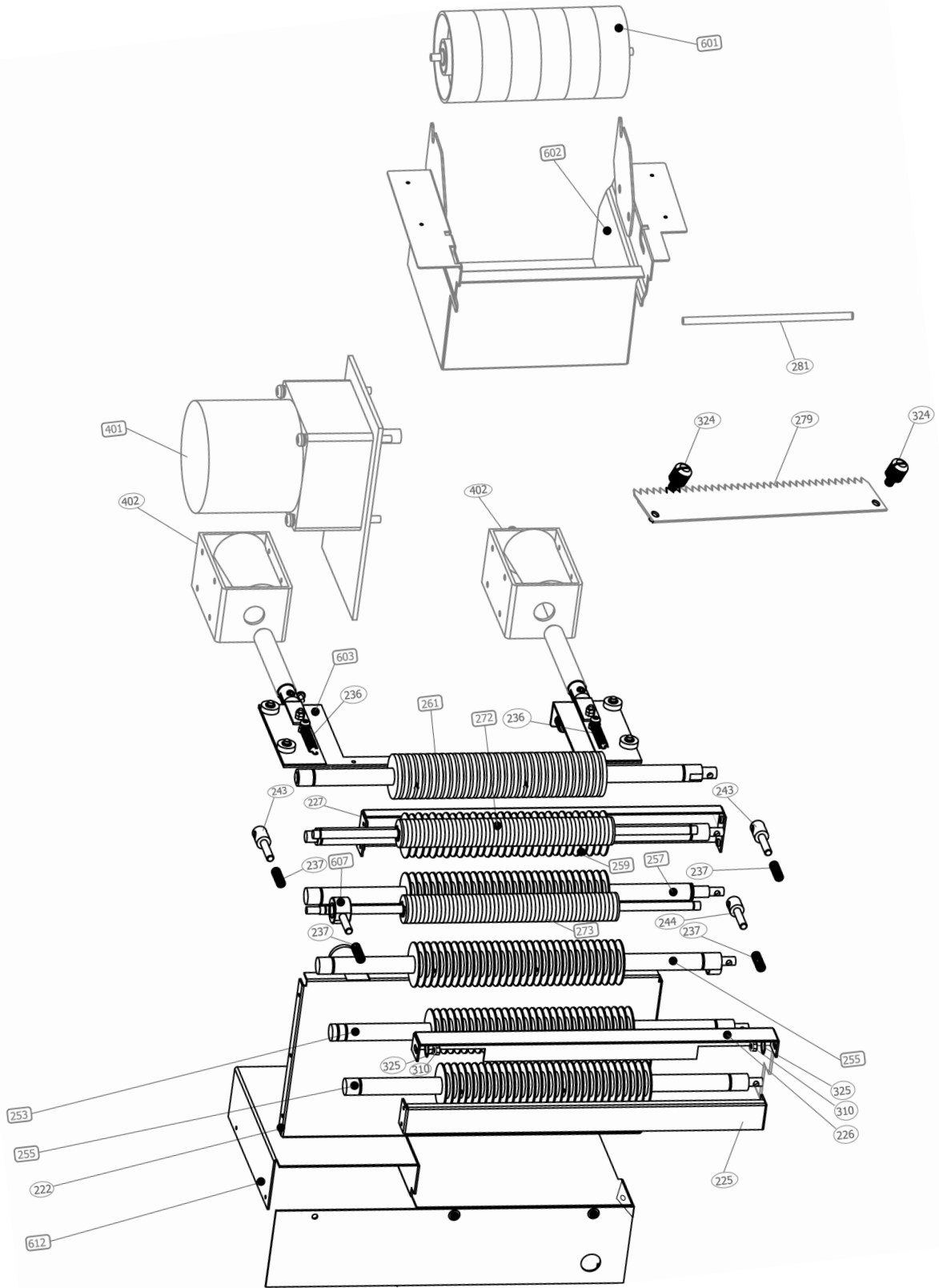
EXPLODED VIEWS



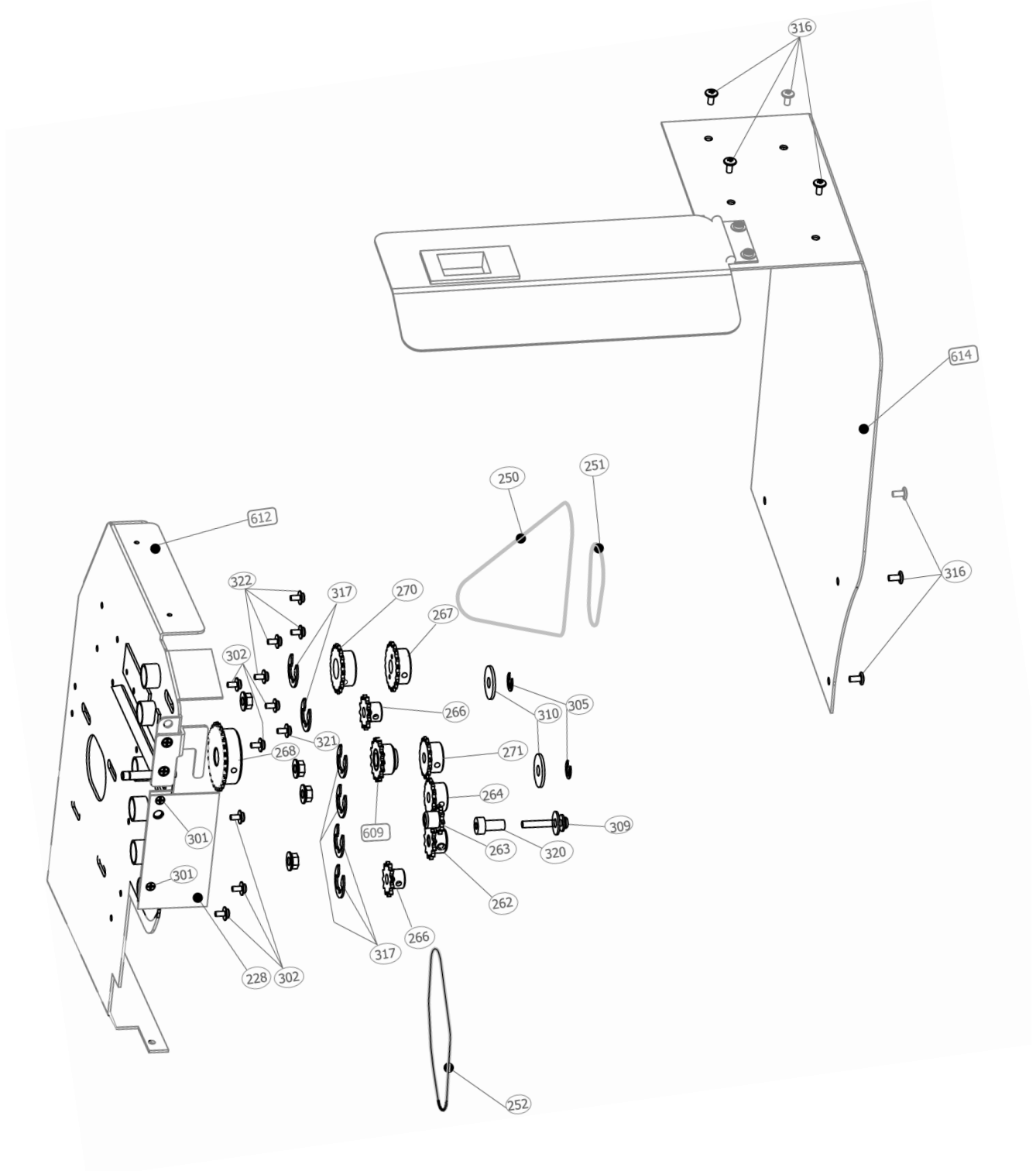
EXPLODED VIEWS



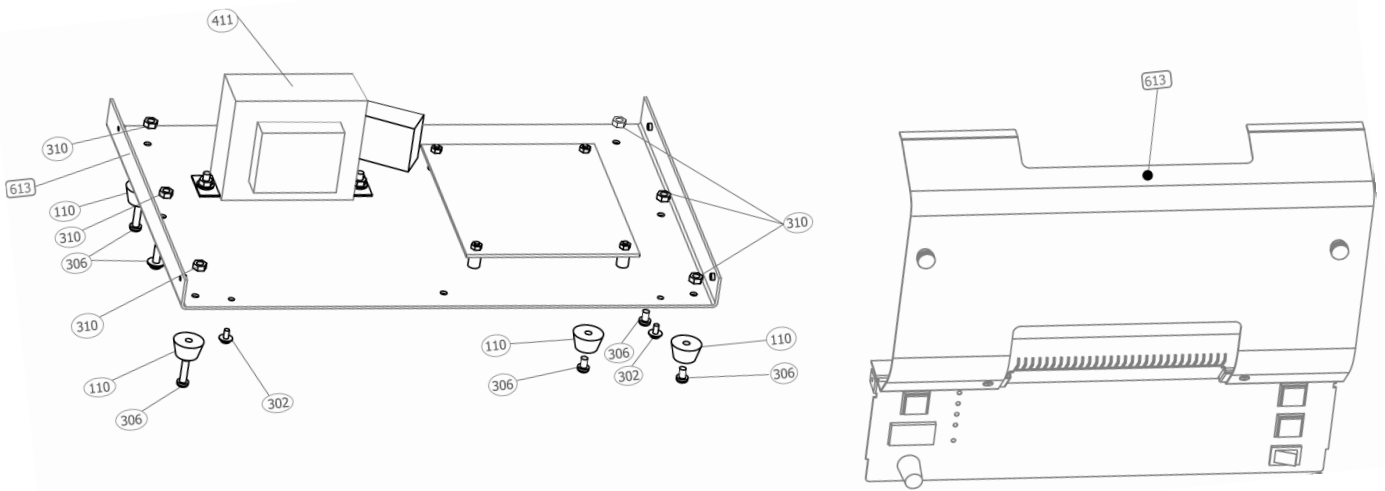
EXPLODED VIEW



EXPLODED VIEWS



EXPLODED VIEWS





We Are Dispensers

TDA150 Part No	Part Description	Drawing
Powercord-B	Power Cord (US)	
Powercord-F	Power Cord (German)	
Powercord-G	Power Cord (UK)	
TDA080P102	Plastic Sleeve	
TDA080P110	Rubber Foot Assembly	
TDA150P204	Reel Bracket, Left	
TDA150P205	Reel Bracket, Right	
TDA150P206	Front Plate	
TDA150P207	Rear Panel Assembly	
TDA150P208	Tape Guide W/ Hardware	
TDA150P208	Anti-Static Brush Tape Guide W/ Hardware	
TDA150P210	Right Panel	
TDA150P211	Bottom Plate	
TDA150P213	Control Plate, Front Bottom (for Analog Display)	
TDA150P213B	Control Plate, Front Bottom (for Digital Display)	
TDA080P214	Digital Display Plastic Cover	
TDA150P218	Safety Switch Lever	
TDA150P218	Safety Switch Bracket	
TDA150P219	Top Frame Stabilizer	



We Are Dispensers

TDA150P222	Middle Inner Plate	
TDA150P223	Bottom Inner Plate	
TDA150P224	Front Inner Plate	
TDA150P225	Front Bottom Connection Plate	
TDA150P226	Front Connection Plate	
TDA150P227	Back Connection Plate	
TDA150P228	Front Right panel	
TDA150P229	Front Left Panel	
TDA080P234	Encoder Wheel (length)	
TDA150P236	Cutter Frame Spring	
TDA080P237	Pressure Roller Spring (bottom)	
TDA080P238	Pressure Roller Spring (top)	
TDA150P243	Slide Pin (Pressure Roller A)	
TDA150P244	Slide Pin (Pressure Roller B)	
TDA150P250	Drive Chain	
TDA080P251	Feed Chain (Upper)	
TDA150P252	Feed Chain (Lower)	
TDA150P253	Bottom Feed Roller A	
TDA150P253-NS	Bottom Feed Roller A Non-Stick	
TDA150P255	4th Feed Roller B (TDA150 uses 2)	









We Are Dispensers

TDA150P255-NS	4th Feed Roller B Non-Stick (TDA150NS uses 2)	
TDA150P257	3rd Feed Roller C	
TDA150P257-NM	3rd Feed Roller C Non-Marking	
TDA150P257-NM-NS	3rd Feed Roller C Non-Marking Non-Stick	
TDA150P257-NS	3rd Feed Roller C Non-Stick	
TDA150P259	2nd Feed Roller D	
TDA150P259-NS	2nd Feed Roller D Non-Stick	
TDA150P261	Top Feed Roller E	
TDA150P261-NM	Top Feed Roller E Non-Marking	
TDA150P261-NM-NS	Top Feed Roller E Non-Marking Non-Stick	
TDA150P261-NS	Top Feed Roller E Non-Stick	
TDA080P263	Sprocket Gear 1 (10T)	
TDA080P264	Sprocket Gear 2 (14T)	
TDA080P265	Sprocket Gear 3 (16T)	
TDA080P266	Sprocket Gear 4 (12T)	
TDA080P267	Sprocket Gear 5 (18T)	
TDA080P268	Motor Sprocket Gear (26T)	
TDA150P271	Sponge Pressure Ring	
TDA080P271-1	E-ring	
TDA080P271-2	Washer	



We Are Dispensers

TDA150P272	Top Pressure Roller Assy.	
TDA150P273	Bottom Pressure Roller Assy.	
TDA150P279	Blade, Straight Edge	
TDA150P279CP	Blade, Center Point (TDA150 Only)	
TDA150P279S	Blade, Fully Serrated with Large Teeth	
	Blade, Serrated	
TDA150P281	Pressing Tape Shaft	
TDA080P282	Hinge	
TDA080P284	Knob and Hardware, Front Door	
TDA080P302	Interior Screw 1/8"X6	
TDA150P303	Screw	
TDA150P304	Screw, Hex	
TDA150P305	Screw, Hex Set	
TDA150P306	Screw	
TDA080P307	Screw, Top Hinge	
TDA080P309	Solenoid Shaft Screw	
TDA080P310	Nut 5/32"	
TDA080P314	Exterior Screw 1/8"X6	
TDA080P315	Interior Screw 5/32"X25	
TDA080P317	E-ring (large)	











We Are Dispensers

TDA080P318	E-ring (small)	
TDA080P319	Washer	
TDA150P320	Right Gear Wheel Sleeve Tension	
TDA080P321	Screw 5/32 x 8	
TDA080P322	Solenoid Screw M3.0X6	
Not Used	Spacer for Encoder (406-2)	
TDA080P324	Blade Screw 3/16"X4	
TDA080P325	Washer (Black Brace)	
TDA080P326	Plastic Washer (Main PCB)	
TDA080P327	Screw for Main PCB 1/8"X19	
TDA080P328	Plastic Wire Holder	
TDA080P329	Screw, Hex Set	
TDA080P333	Spacer for Encoder (406-1)	
TDA080P333	Screw for Encoder (406-1) 1/8' x 6	
TDA080P353	Voltage Switch	
TDA080P401	Motor Unit	
TDA080P401-1	Screw, Motor Unit	
TDA080P401-2	Washer, Lock, Motor Unit	
TDA080P401-3	Spacer, Motor Unit	
TDA080P402	Solenoid Unit	



We Are Dispensers

TDA080P403-A	Main PCB (1st version)	
TDA080P403-B	Main PCB (2nd version)	
TDA080P403-C	Main PCB (current version)	
TDA080P404	Control PCB (Analog)	
TDA080P404B	Control PCB (Digital Display)	
TDA080P404M	Control PCB with Memory (Digital Display)	
TDA080P405	Screw to Mount the Control PCB	
TDA080P406	Wire Harness, Sensor	
TDA080P406-1	TDA080/150 Length Encoder (left) TDA150 Auto Feed Encoder	
Not Used	TDA080 Auto Feed Encoder (right)	
TDA080P407	Switch, Safety Interlock	
TDA080P408	Connector, Foot Switch (Rear of Dispenser)	
TDA080P409	Capacitor, Motor Start	
TDA080P411	Transformer	
TDA080P413	Mode Button (Black)	
TDA080P414	Power Inlet	
TDA080P415	Interval Switch (Potentiometer)	
TDA080P416	Advance Button (Green)	
TDA080P417	Cut Button (Yellow)	
TDA080P418	Power Switch	



We Are Dispensers

TDA080P419	MM & CM Button Cover (Black)	
TDA080P420	Reset / Memory Button Cover (White)	
TDA150P601	Reel Holder Assembly	
TDA150P602	Tape Holder Assembly	
TDA150P603	Blade Holder Assembly	
TDA150P604	Top Door Assembly	
TDA080P605	Encoder Wheel Assembly, Autostart	
TDA080P607	Roller Support, One Way	
TDA150P609	Roller Gear, One Way	
TDA150P610	Cover (left)	
TDA150P611	Inner Plate Assembly (left)	
	Inner Plate Assembly (left) (New Version)	
TDA150P612	Inner Plate Assembly (right)	
	Inner Plate Assembly (right) (New Version)	
TDA150P616	Front Cover Assembly w/ Control Panel	
TDA150P618	Cover (right)	
TDA150P620	Bottom Panel Assembly	
TDA150P621	Bottom Plate Assembly	
TDA080PFS-1	Foot Switch (Complete)	
TDA080PFS-1	Foot Switch Connector (for Footswitch Cable)	