



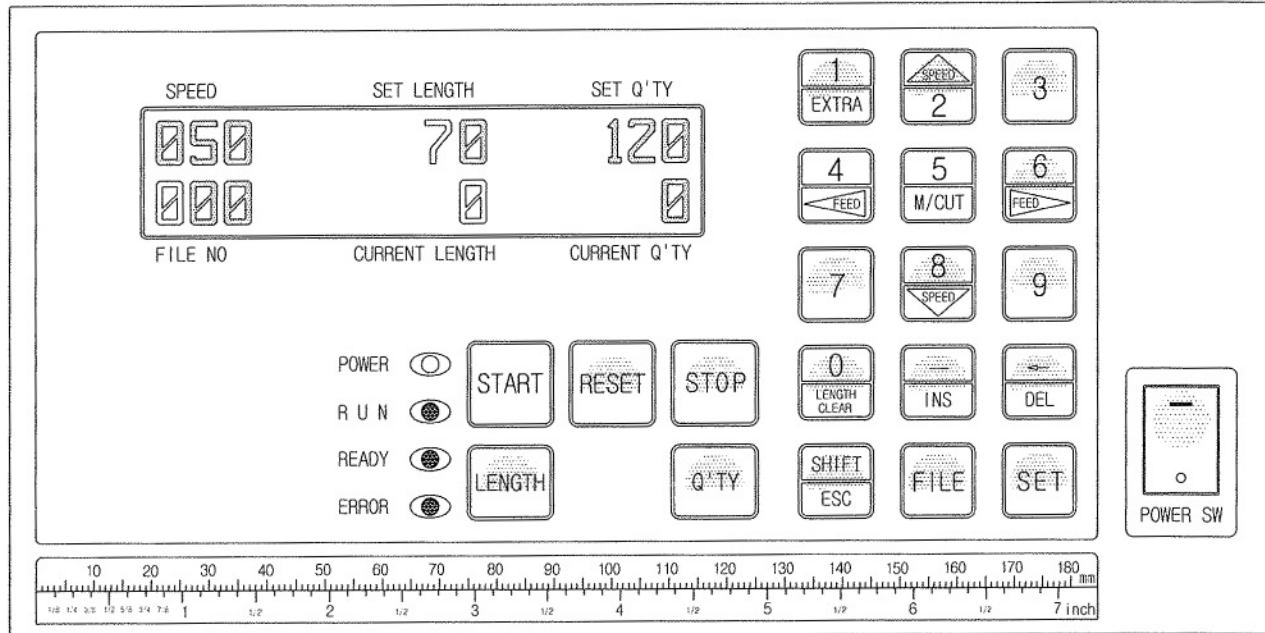
---

# AUTOMATIC EXTRA LARGE CUTTER

## TBC-555LM

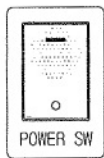


## How to operate TBC-555LM

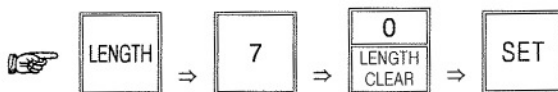


1. An example (Cutting length : 70mm, Cutting quantity : 120 pcs)

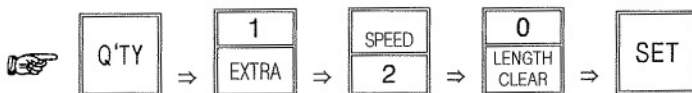
▷ Turn on the POWER SW.



▷ Set cutting length. (Press the following buttons in order.)



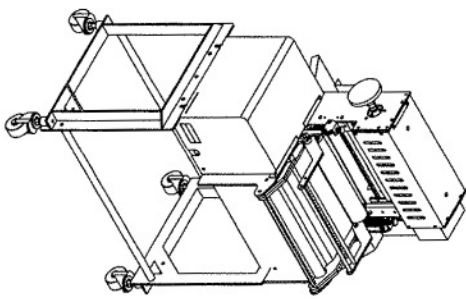
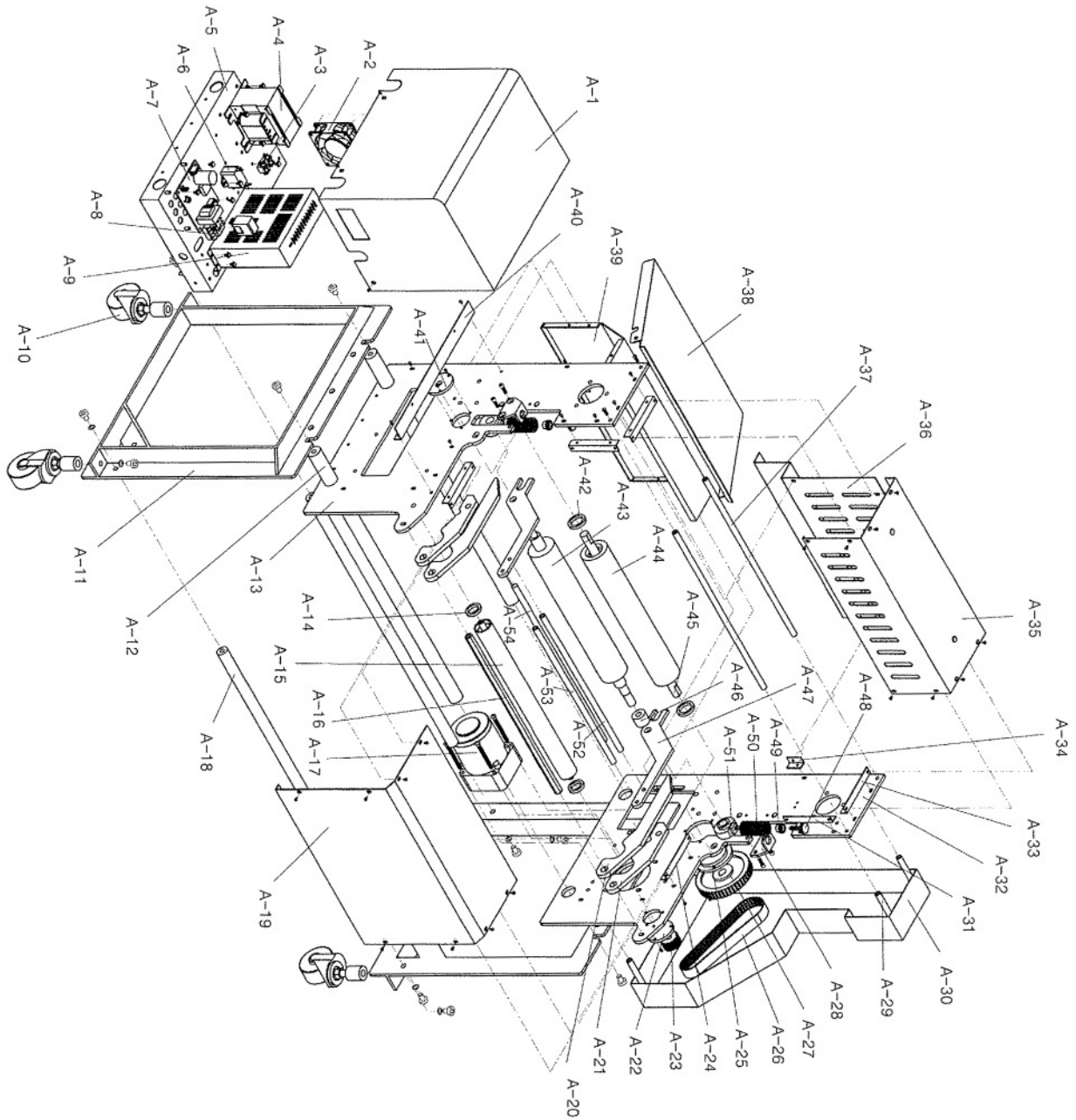
▷ Set cutting quantity.



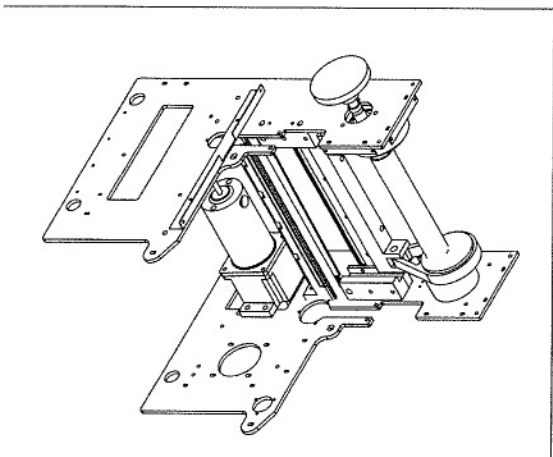
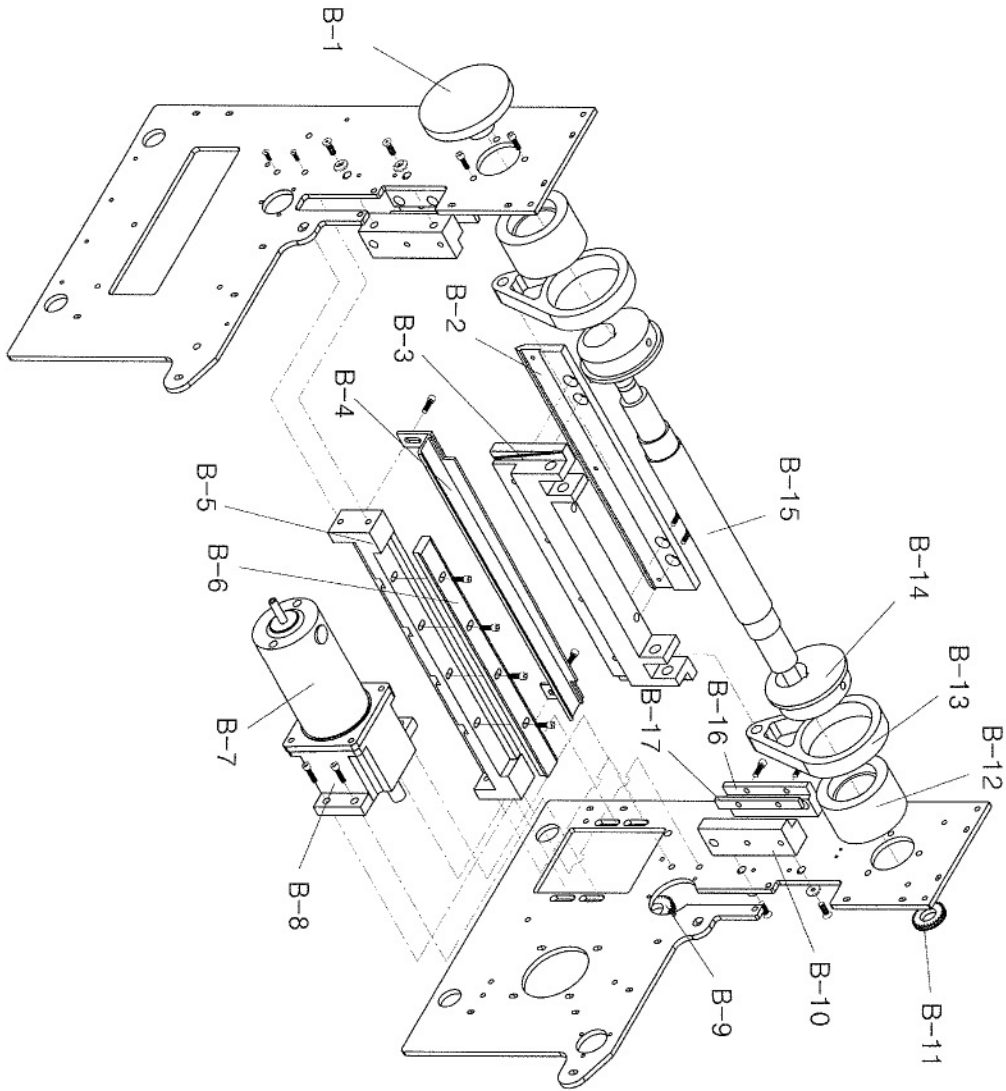
▷ Press START button.



TBC-555LM Part Drawing A (Cutting Part)



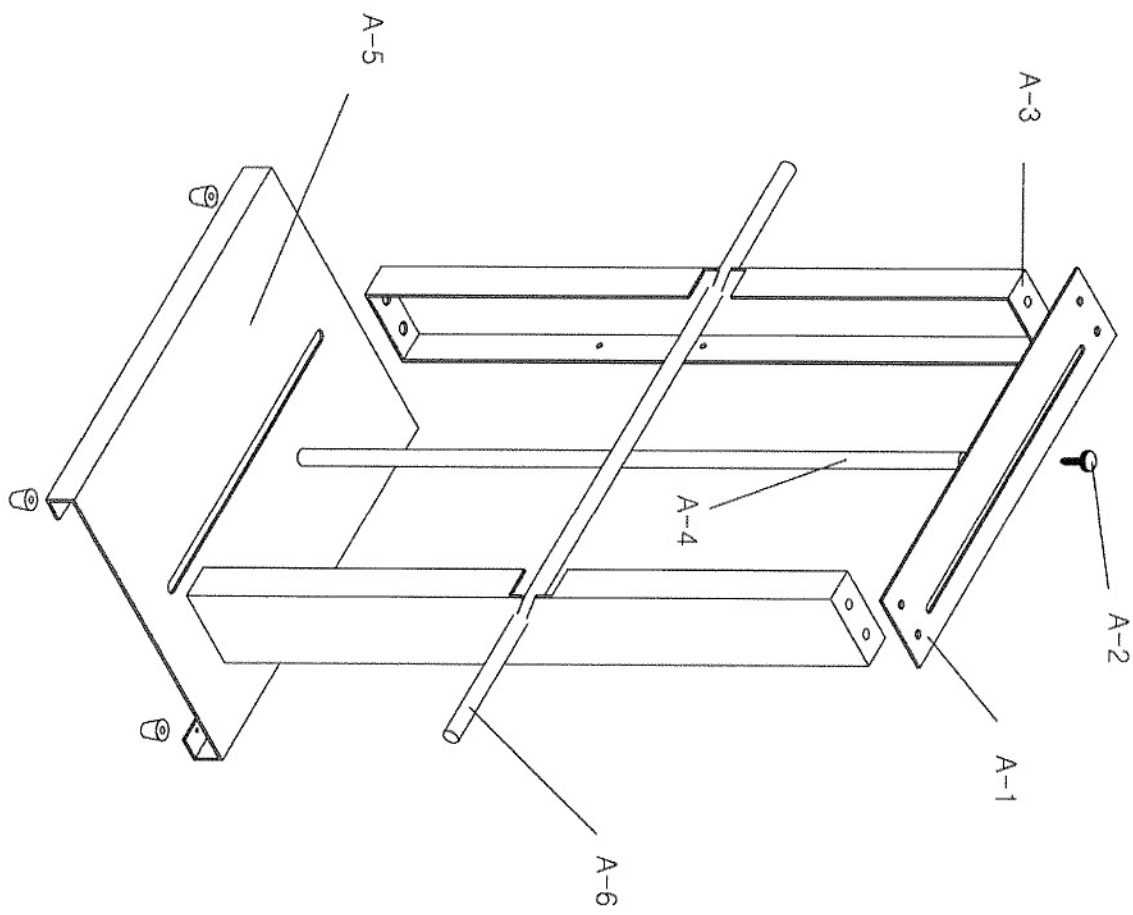
TBC-555LM Part Drawing B (Feeding Part)



TBC-555LM Part List B (Feeding Part)

| Part No. | Description           | Part No. | Description |
|----------|-----------------------|----------|-------------|
| B-1      | SHAFT KNOB HANDLE     |          |             |
| B-2      | LOWER KNIFE           |          |             |
| B-3      | LOWER KNIFE FRAME     |          |             |
| B-4      | STOPPER               |          |             |
| B-5      | LOWER KNIFE BRACKET   |          |             |
| B-6      | UPPER KNIFE           |          |             |
| B-7      | MOTOR                 |          |             |
| B-8      | REDUCTION GEAR        |          |             |
| B-9      | GEAR                  |          |             |
| B-10     | PRESSURE PLATE (PAD)  |          |             |
| B-11     | GEAR                  |          |             |
| B-12     | CRANK BEARING HOUSING |          |             |
| B-13     | LINK                  |          |             |
| B-14     | CRANK                 |          |             |
| B-15     | CRANK SHAFT           |          |             |
| B-16     | PRESSURE PLATE        |          |             |
| B-17     | PRESSURE PLATE (PAD)  |          |             |
|          |                       |          |             |
|          |                       |          |             |
|          |                       |          |             |

TBC-555LM Part Drawing C (Feeding Part)



## Trouble-shooting of TBC-50 series

| No | Troubles   |                                      | Applicable model           | Causes & Measures  |
|----|--|--------------------------------------|----------------------------|--|
| 1  | No power supply  |                                      | All models                 | <ul style="list-style-type: none"> <li>- Check if electric cord is connected well.</li> <li>- Check if the fuse blows out or not.</li> </ul>   |
| 2  | Power is on, but no work   | Feeding roller doesn't work.         | All models                 | <ul style="list-style-type: none"> <li>- Check if there is inserted any alien substance in roller.</li> <li>- If current length on display is changed, exchange drive board.</li> <li>- If current length on display is not changed, exchange Control board(MB).</li> </ul>  |
|    |  | Knife doesn't work.                  | All models                 | <ul style="list-style-type: none"> <li>- Check if pressure plates of upper knife are too much fastened or not.</li> </ul>  |
|    |  | LCD display doesn't work.            | All models                 | <ul style="list-style-type: none"> <li>- After opening the cover, check the connection. (especially between Operation &amp; MB board)</li> </ul>   |
|    |  | All functions don't work             | All models                 | <ul style="list-style-type: none"> <li>- Check if auto-stop device lies down. If any, raise it up.</li> </ul>  |
| 3  | Material is not cut.   |                                      | Hot cutter (H, LH, SH, HX) | <ul style="list-style-type: none"> <li>- Check if temperature goes up to set-degree.</li> <li>- Check if knife blades are even(parallel).</li> </ul>   |
| 4  | Material is cut onesidedly.  |                                      | All models                 | <ul style="list-style-type: none"> <li>- Check if blades are damaged or wearied.</li> <li>- After making both knives close each other by M/CUT button and check if they are even or not. (If they are not even, adjust them by bolts)</li> </ul>   |
| 5  | Cut-length is different from set-length.   |                                      | All models                 | <ul style="list-style-type: none"> <li>- Test cutting after loosening material from the reel by hand or attaching feeding device.</li> </ul>   |
| 6  | It cuts before the cutting line of labels.   |                                      | Label cutter (S, SH)       | <ul style="list-style-type: none"> <li>- Move the sensor towards knife side as long as the difference by pushing.</li> </ul>   |
| 7  | It cuts after the cutting line of labels.  |                                      | Label cutter (S, SH)       | <ul style="list-style-type: none"> <li>- Move the sensor towards counter-knife side as long as the difference by pushing.</li> </ul>   |
| 8  | ERROR on LCD & LED   | ERROR CODE [064]<br>>Sensor check Er | Label cutter (S, SH)       | <ul style="list-style-type: none"> <li>- Trouble in Mark sensor →</li> <li>· Check if the sensor is connected well or not.</li> <li>· Check if the sensor is adjusted well or not. (FILE NO 001)</li> <li>· Check if it is label problem or not.</li> </ul>  |
|    |  | ERROR CODE [065]<br>>CUT I/O Error!  | All models                 | <ul style="list-style-type: none"> <li>- Trouble in cutting motor or cutting sensor →</li> <li>· Upper knife moves 1~3 sec. and ERROR on display. Check the connection of cutting sensor. If not, exchange the cutting sensor.</li> <li>· Upper knife doesn't move and ERROR on display. Exchange the cutting motor or drive board.</li> </ul>                         |
|    |  | STOP INPUT !!<br>CHECK STOP INP!     | All models                 | <ul style="list-style-type: none"> <li>- Auto stop device is pressed down or shortage. → raise up the device and check shortage.</li> </ul>  |
|    |  | (C)ACORD CTRL-OP<br>AMC-T3KA VER1.7D | All models                 | <ul style="list-style-type: none"> <li>- Bad connected ROM → Press ROM by hand or connect it again. (If not, change MB board)</li> </ul>   |
|    |  | ERROR CODE[065]<br>>CHECK CODE[003]  | All models                 | <ul style="list-style-type: none"> <li>- Change of FILE 003 in program by noise or mis-operation → <a href="#">Initialize the controller</a>.</li> <li>※ <a href="#">How to Initialize(programs to be initial)</a> :<br/>press <b>SET + SHIFT/ESC</b> buttons and <b>RESET</b> button at the same time.<br/>(Press <b>RESET</b> later than other two keys.)</li> </ul> |
| 9  | Operator feels electric current in touch of machine.   |                                      | All models                 | <ul style="list-style-type: none"> <li>- Connect the earth cord(green) to any bolt of backside of machine.</li> </ul>  |
| 10 | After exchange ROM, you should do <a href="#">initialize the controller</a> , due to error message, if you cannot do initialization, please press "SHIFT/ESC" button to escape error message screen and then <a href="#">initialize the controller</a> . |                                      |                            |  |

**Please Contact START International  
with any Questions or Technical Assistance at:**

**Tel. +1 (972) 248-1999  
Fax +1 (972) 248-1991  
[www.STARTinternational.com](http://www.STARTinternational.com)**

**4270 Airborn Drive  
Addison, TX 75001  
U.S.A.**

