

ZCUT3060

Electronic Tape Dispenser

Instruction Manual

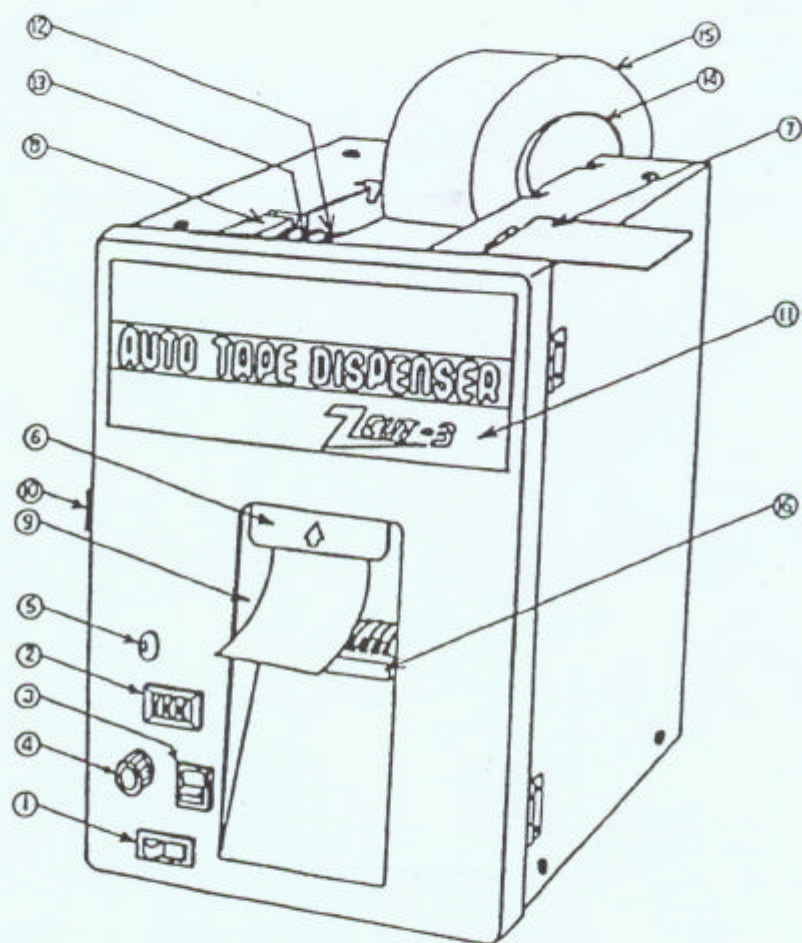


START International
4270 Airborn Drive
Addison, TX 75001, USA

Tel. 972.248.1999
Fax. 972.248.1991

info@startinternational.com
www.startinternational.com

ZCUT3060/ZCUT3080



1. POWER SWITCH
3. AUTO / MANUAL SWITCH
5. OVER LOAD ALARM LAMP
7. SAFETY COVER
9. TAPE OUTLET
11. FRONT PANEL
13. RUBBER ROLLER
15. TAPE

2. TAPE LENGTH COUNTER
4. INTERVAL ADJUSTMENT KNOB
6. PANEL SWITCH
8. MAGNET LOCK
10. HOOK
12. ROLLER
14. BOBBIN
16. TAPE GUIDE

INSTRUCTION MANUAL

INTRODUCTION

Thank you for purchasing our Automatic Tape Dispenser.
Our product is produced for industrial use.
Please follow the directions carefully and become familiar with machine before handling it.

BEFORE USE

- 1) Before you plug in the cord, make sure that the Power Switch ① is off.
- 2) Set the Tape Length Counter ② for more than 200mm.
*If you this for less than 200mm, the tape would not come out smoothly.
- 3) Set the Auto/Manul Switch ③ for Manual.
- 4) Plug into an outlet firmly.
- 5) Turn on the Power Switch ①.
- 6) Put a tape onto the Bobbin ⑭.
- 7) Open the Safety Cover ⑦.
- 8) Extend the tape and bend the end about 20-30mm to the sticky side.
*If the tape has no glue, bending is not necessary.
- 9) Insert the tape between the Roller ⑫ and ⑬.
- 10) Tap the Panel Switch ⑥ upwards once lightly.
- 11) Cut two or three pieces to make sure that tape comes out from the Tape Outlet ⑨.
- 12) Make sure that the tape is coming out smoothly, then close the Safety Cover ⑥.
*If the tape winds around the other Roller, please turn off

INSTRUCTION MANUAL

the Power Switch ①, remove the Front Panel Hook ⑩ and open the panel.

Cut the wound up the tape off and start again.

*Whenever cut the wound up the tape off, extreme care for do not scratch the roller.

- 13) Set the tape length as you like.
Anytime you set the length, the Power Switch ① must be off.

MANUAL

If you want to cut the tape one by one, use Manual.

Set the Auto / Manual Switch ③ for Manual. The Manual Switch ③ can be turned on by taking the tape upwards.

AUTOMATIC

If you prefer automatic, set Auto / Manual Switch ③ for Auto. When you set the interval between cuts, use Interval Adjustment Knob ④.

Full scale is graduated up to about 10 sec.

OVER LOAD

If the tape winds around the roller, and can not cut the tape, Over Load Alarm Lamp ⑤ is turned on.

The machine will stop immediately.

- 1) Turn off the Power Switch ①.
- 2) Open the Front Panel ⑪ and take out the wound up tape.

*You can move the roller by hand.

SAFETY SWITCH

Whenever open the Front Panel ⑪, Power Switch ① is turned off for your safety.

INSTRUCTION MANUAL

HOW TO CHANGE THE BLADE

The blade is consumption goods.

Blade's life depends on tape's quality or thickness.

Our machine uses simple blade, so you can buy it anywhere.

TAKE OUT

- 1) Take off the Front Hook ⑩ and open the Front Panel ⑪.
- 2) Take out the screw.
*When you use saw blade, take out the hexagon head bolt.
- 3) Pull out the blade from the slit.

PUT ON

- 1) There is the split on the right side of the blade.
- 2) Insert the blade into the slit.

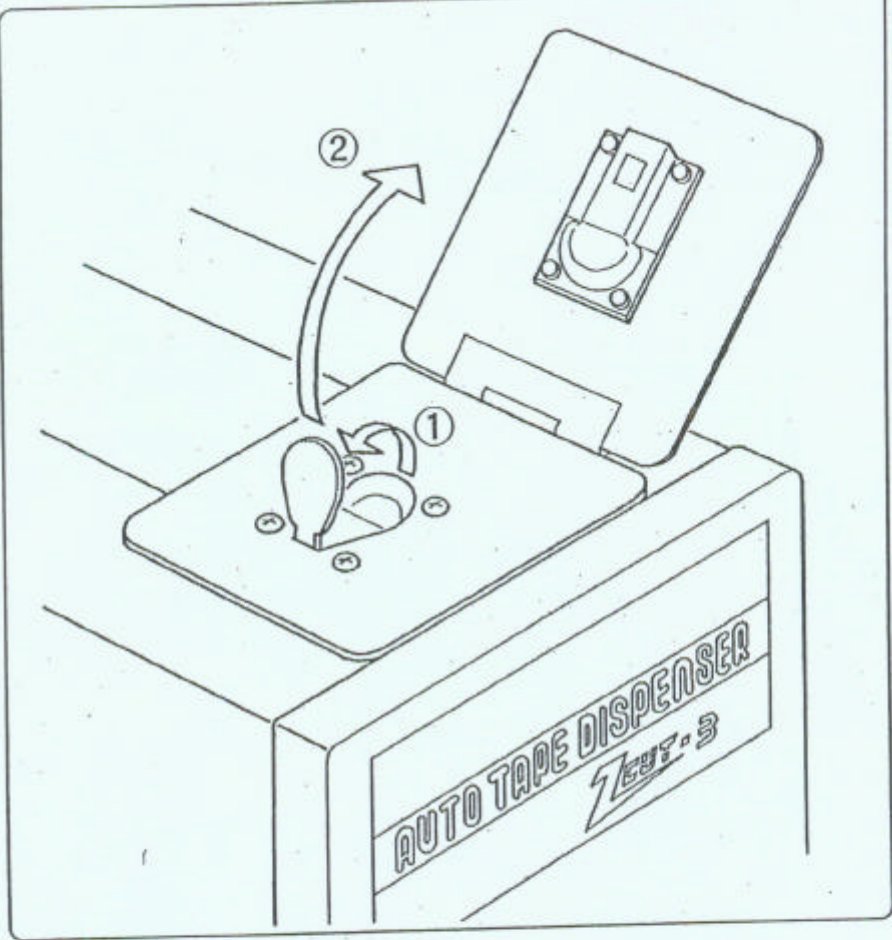
HOW TO TAKE OFF THE TAPE

- 1) Open the Safety Cover ⑦.
- 2) Take off the tape from the body.
- 3) Pull out the tape upwards.

INSTRUCTION MANUAL

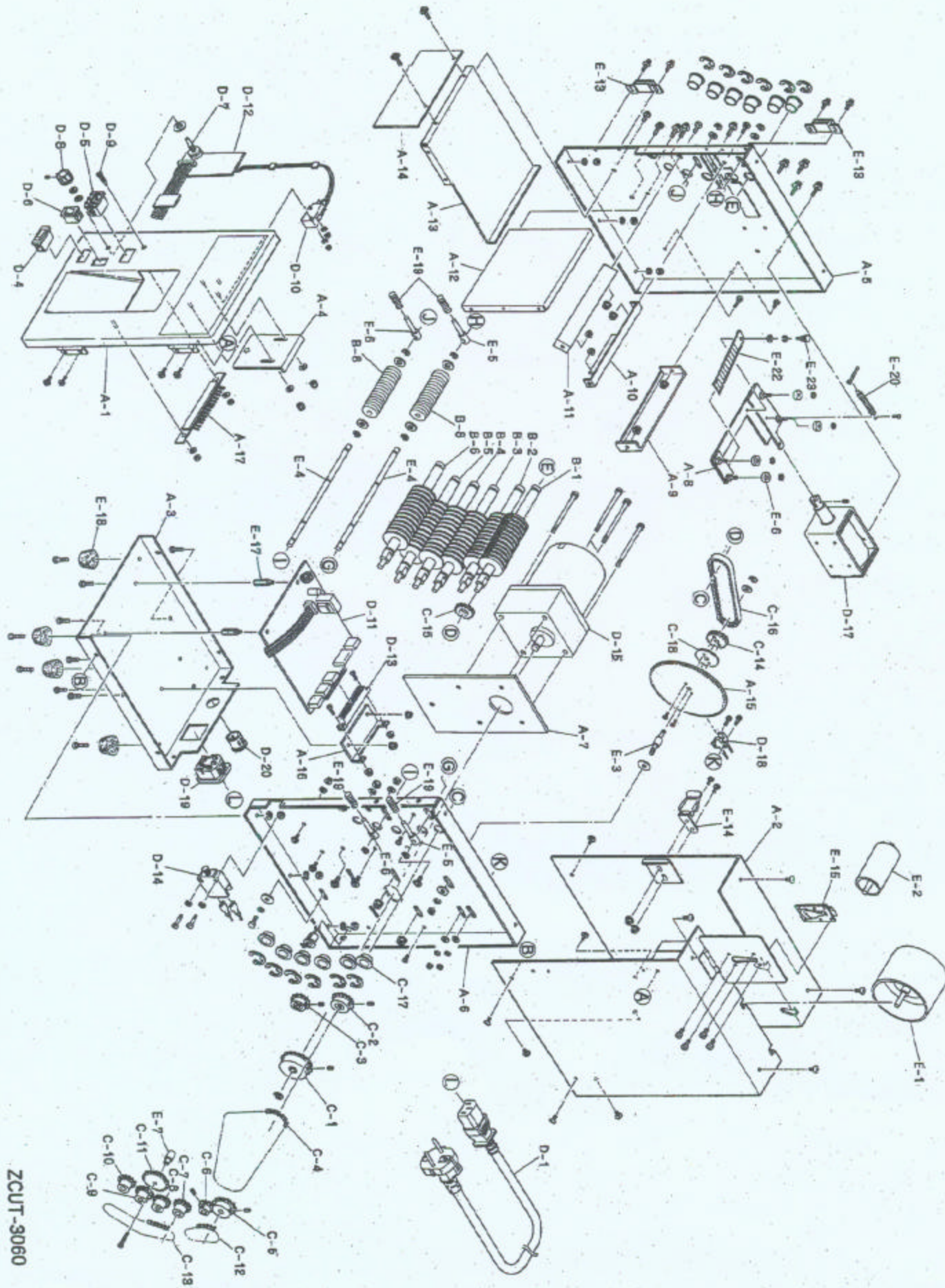
SPECIFICATIONS

| | |
|-------------------|--|
| POWER REQUIREMENT | 100V, 120V, 220-240V (150W-600W) |
| DIMENSIONS | 190(W) × 290(H) × 250(D) MM |
| WEIGHT | 11 KGS. |
| TAPE SPEED | 132 MM / SEC 50HZ 160 MM / SEC 60HZ |
| TAPE WIDTH | FROM 15 MM TO 60 MM |
| CUTTING LENGTH | FROM 40 MM to 999 MM |
| SIZE OF ROLL TAPE | OUTSIDE DIAMETER OF ROLL TAPE MAXIMUM 200 MM |
| ACCESSORIES | BOBBIN (31 MM) 1 PCS. BOBBIN (75 MM) 1 PCS. FUSE 5A (100V, 120V) 3A (220V, 240V) 2 PCS. SPARE BLADE 6 PCS. |



How to open the safety lid

- ① Pick a stay-on tab up.
- ② Open the safety lid.



ZCUT-3060